



TEL:4006-871-227 Web:www.ybio.net Email:shybio@126.com

YBB062Hu02 100µg
Recombinant Heat Shock 70kDa Protein 1 Like Protein (HSPA1L)
Organism Species: Homo sapiens (Human)
Instruction manual

FOR IN VITRO USE AND RESEARCH USE ONLY
NOT FOR USE IN CLINICAL DIAGNOSTIC PROCEDURES

9th Edition (Revised in Jul, 2013)

[PROPERTIES]

Residues: Met1~Asp641 (Accession # P34931), with two N-terminal Tags, His-tag and S-tag.

Host: *E. coli*

Purity: >95%

Endotoxin Level: <1.0EU per 1µg
(determined by the LAL method).

Formulation: Supplied as lyophilized form in PBS, pH7.4,
containing 5% sucrose, 0.01% sarcosyl.

Predicted isoelectric point: 5.7

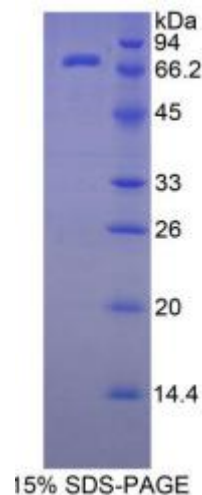
Predicted Molecular Mass: 76.1kDa

Applications: SDS-PAGE; WB; ELISA; IP.

(May be suitable for use in other assays to be determined by the end user.)

[USAGE]

Reconstitute in sterile PBS, pH7.2-pH7.4.





TEL:4006-871-227 Web:www.ybio.net Email:shybio@126.com

[STORAGE AND STABILITY]

Storage: Avoid repeated freeze/thaw cycles.

Store at 2-8°C for one month.

Aliquot and store at -80°C for 12 months.

Stability Test: The thermal stability is described by the loss rate of the target protein. The loss rate was determined by accelerated thermal degradation test, that is, incubate the protein at 37°C for 48h, and no obvious degradation and precipitation were observed. (Referring from China Biological Products Standard, which was calculated by the Arrhenius equation.) The loss of this protein is less than 5% within the expiration date under appropriate storage condition.

[SEQUENCES]

The target protein is fused with two N-terminal Tags, His-tag and S-tag, its sequence is listed below.

**MHHHHHSSG LVPRGSGMKE TAAAKFERQH MDSPDLGTDD DDKAMADIGS EF-
MATAKGIAIG IDLGGTYSCV GVFQHGKVEI IANDQGNRTT PSYVAFTDTE RLIGDAAKNQ
VAMNPQNTVF DAKRLIGRKF NDPVVQADMK LWPVQVINEG GPKKVLVSYK GENKAFYPEE
ISSMVLTKLK ETAEFLGHP VTNAVITVPA YFNDSQRQAT KDAGVIAGLN VLRIINEPTA
AAIAYGLDKG GQGERHVLIF DLGGGTFDVS ILTIDDGIFE VKATAGDTHL GGEDFDNRLV
SHFVEEFKRK HKKDISQNKR AVRRLRTACE RAKRTLSSST QANLEISLY EGIDFYTSIT
RARFEELCAD LFRGTLEPVE KALRDAKMDK AKIHDIVLVG GSTRIKPVQR LLQDYFNDRD
LNKSINPDEA VAYGAAVQAA ILMGDKSEKV QDLLLLDVAP LSLGLETAGG VMTALIKRNS
TIPTKQTQIF TTYSDNQPGV LIQVYEGERA MTKDNNLLGR FDLTGIPPAP RGVPQIEVTF
DIDANGILNV TATDKSTGKV NKITITNDKG RLSKEEIERM VLDAEKYKAE DEVQREKIAA
KNALESYAFN MKSVVSDEGL KKGISESDKN KILDKCNELL SWLEVNQLAE KDEFDHHRKE
LEQMCNPIIT KLYQGGCTGP ACGTGYVPGR PATGPTIEEV D**