



TEL:4006-871-227 Web:www.ybio.net Email:shybio@126.com

YBB369Ra01 100µg

**Recombinant Major Histocompatibility
Complex Class II Invariant Chain (MHCDG)
Organism Species: Rattus norvegicus (Rat)**

Instruction manual

**FOR IN VITRO USE AND RESEARCH USE ONLY
NOT FOR USE IN CLINICAL DIAGNOSTIC PROCEDURES**

10th Edition (Revised in Jan, 2014)

[PROPERTIES]

Residues: Leu65~Gln277

Tags: Two N-terminal Tags, His-tag and GST-

Accession: P10247

Host: *E. coli*

**Subcellular Location: Membrane; Single-pass
type II membrane protein.**

Purity: >90%

**Endotoxin Level: <1.0EU per 1µg (determined by
the LAL method).**

**Formulation: Supplied as lyophilized form in PBS,
pH7.4, containing 5% trehalose, 0.01% sarcosyl.**

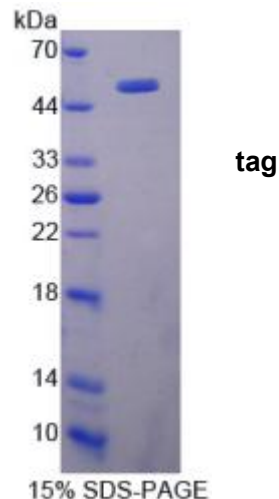
Predicted isoelectric point: 8.7

Predicted Molecular Mass: 54.1kDa

Applications: SDS-PAGE; WB; ELISA; IP.

(May be suitable for use in other assays to be determined by the end user.)

[USAGE]





TEL:4006-871-227

Web:www.ybio.net

Email:shybio@126.com

Reconstitute in sterile PBS, pH7.2-pH7.4.



TEL:4006-871-227 Web:www.ybio.net

Email:shybio@126.com

[STORAGE AND STABILITY]

Storage: Avoid repeated freeze/thaw cycles.

Store at 2-8°C for one month.

Aliquot and store at -80°C for 12 months.

Stability Test: The thermal stability is described by the loss rate of the target protein. The loss rate was determined by accelerated thermal degradation test, that is, incubate the protein at 37°C for 48h, and no obvious degradation and precipitation were observed. (Referring from China Biological Products Standard, which was calculated by the Arrhenius equation.) The loss of this protein is less than 5% within the expiration date under appropriate storage condition.

[SEQUENCES]

The sequence of the target protein is listed below.

**LTVTSQ NLQLENLRMK LPKSAKPVSP MRMATPLLMR PLSMDNMLQA PVKNVTKYGN
MTQDHVMHLLTKSGPVNYPQLKGSFPENLKHLKNSMNGLDWKVFESWMKQ
WLLFEMSKNS LEEKQPTQTP PKVLTKCQEE VSHIPDVHPG AFRPKCDENG NYMPLQCHGS
TGYCWCVPFN GTEVPHTKSR GRHNCSEPLD MEDPSSGLGV TKQDMGQ**