



TEL:4006-871-227 Web:www.ybio.net Email:shybio@126.com

YBB660Ra01 100 $\mu$ g

Recombinant Fatty Acid Transport Protein 5 (FATP5)

Organism Species: *Rattus norvegicus* (Rat)

*Instruction manual*

FOR IN VITRO USE AND RESEARCH USE ONLY  
NOT FOR USE IN CLINICAL DIAGNOSTIC PROCEDURES

9th Edition (Revised in Jul, 2013)

### [ PROPERTIES ]

Residues: Glu488~Leu690 (Accession # Q9ES38),  
with two N-terminal Tags, His-tag and GST-tag.

Host: *E. coli*

Subcellular Location: Endoplasmic reticulum  
membrane; Multi-pass membrane protein.

Purity: >95%

Endotoxin Level: <1.0EU per 1 $\mu$ g  
(determined by the LAL method).

Formulation: Supplied as lyophilized form in PBS,  
pH7.4, containing 5% sucrose, 0.01% sarcosyl.

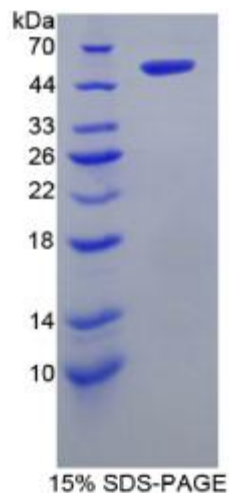
Predicted isoelectric point: 6.2

Predicted Molecular Mass: 54.9kDa

Applications: SDS-PAGE; WB; ELISA; IP.

(May be suitable for use in other assays to be determined by the end user.)

### [ USAGE ]





TEL:4006-871-227

Web:[www.ybio.net](http://www.ybio.net)

Email:[shybio@126.com](mailto:shybio@126.com)

**Reconstitute in sterile PBS, pH7.2-pH7.4.**



## [ STORAGE AND STABILITY ]

Storage: Avoid repeated freeze/thaw cycles.

Store at 2-8°C for one month.

Aliquot and store at -80°C for 12 months.

Stability Test: The thermal stability is described by the loss rate of the target protein. The loss rate was determined by accelerated thermal degradation test, that is, incubate the protein at 37°C for 48h, and no obvious degradation and precipitation were observed. (Referring from China Biological Products Standard, which was calculated by the Arrhenius equation.) The loss of this protein is less than 5% within the expiration date under appropriate storage condition.

## [ SEQUENCES ]

The target protein is fused with two N-terminal Tags, His-tag and GST-tag, its sequence is listed below.

MSPILGYWKI KGLVQPTRLLEYLEEKYEE HLYERDEGDK WRNKKFELGL EFPNLPYYID  
GDVKLTQSMA IIRYIADKHN MLGGCPKERA EISMLEGAVL DIRYGVSRIA YSKDFETLKV  
DFLSKLP EML KMFEDRLCHK TYLNGDHVTH PDFMLYDALD VVLYMDPMCL DAFPKLVCFK  
KRIEAIQID KYLKSSKYIA WPLQGQATF GGDHPPKSD GSTSGSGHHH HHSAGLVPR  
GS TA IG MKE T AAA KFE RQ H M DS PD LGT LEV LF QG P LGS EF - ETG KPG LLLTKI R  
K N Q P F L G Y R G S Q D E T K R K L V A N V R Q V G D L Y N T G D V L A L D Q E G F F Y F R D R  
LGDTRRWKGE NVSTREVEGV LSILDFLEEV NRYGVTVPGC EGKVGMAAVK LAPGKTFDGG  
KLYQHVRSWL PAYATPHFIR IQDSLEITNT YKLVKSQLAR EGFVDGVVIAD PLYILDNKA  
E TFRSLMPDVY QAVCEGTWKL