



TEL:4006-871-227 Web:www.ybio.net Email:shybio@126.com

**YB93161Ra01**  
**100µg**

**N-Acetyl Alpha-D-Glucosaminidase (NAGLU)**

**Organism: Rattus norvegicus (Rat)**

***Instruction manual***

FOR IN VITRO USE AND RESEARCH USE ONLY

NOT FOR USE IN CLINICAL DIAGNOSTIC PROCEDURES

7th Edition (Revised in May, 2013)

## **[ PROPERTIES ]**

**Residues:** Asn449~Asn709 (Accession # D3ZZL3), with two N-terminal Tags, His-tag and GST-tag.

**Host:** *E. coli*

**Purity:** >95%

**Endotoxin Level:** <1.0EU per 1µg (determined by the LAL method).

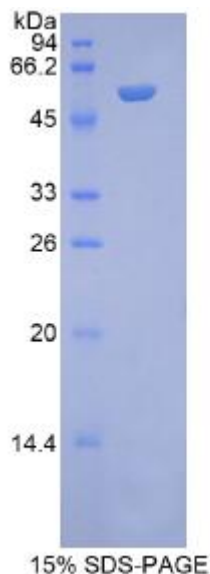
**Formulation:** Supplied as lyophilized form in PBS, pH7.4, containing 5% sucrose, 0.01% sarcosyl.

**Predicted isoelectric point:** 6.2

**Predicted Molecular Mass:** 56.6kDa

**Applications:** SDS-PAGE; WB; ELISA; IP.

(May be suitable for use in other assays to be determined by the end user.)





TEL:4006-871-227 Web:www.ybio.net

Email:shybio@126.com

## [ USAGE ]

Reconstitute in sterile PBS, pH7.2-pH7.4.

## [ STORAGE AND STABILITY ]

**Storage: Avoid repeated freeze/thaw cycles.**

Store at 2-8°C for one month.

Aliquot and store at -80°C for 12 months.

**Stability Test:** The thermal stability is described by the loss rate of the target protein. The loss rate was determined by accelerated thermal degradation test, that is, incubate the protein at 37°C for 48h, and no obvious degradation and precipitation were observed. (Referring from China Biological Products Standard, which was calculated by the Arrhenius equation.) The loss of this protein is less than 5% within the expiration date under appropriate storage condition.

## [ SEQUENCES ]

The target protein is fused with two N-terminal Tags, His-tag and GST-tag, its sequence is listed below.

MRNKKFELGL EFPNLPYYID GDVKLTQSMA IIRYIADKHN MLGGCPKERA EISMLEGAVL  
DIRYGVSRIA YSKDFETLKV DFLSKLPEML KMFEDRLCHK TYLNGDHVTH PDFMLYDALD  
VVLYMDPMCL DAFPKLVCFK KRIEAIQID KYLKSSKYIA WPLQGWQATF GGGDHPPKSD  
G S T S G S G H H H H H S A G L V P R G S T A I G M K E T A A A K F E R Q H M D S P D L G T L E V  
LFQ GP LG SE F-N E VVYAL MA ELG WRK DP VP DLV AWV SS FAS RR YG VS QP DAVA  
AWRLLRSVY NCSGEACSGH NRSPLVKRPS LQMSTAVWYN RSDVFEAWRL LLRAAPNLTA  
SPAFRYDLLD VTRQAVQELV SSCYEEARTA FLNQDLDLLL RAGLLTYKL LPSLDELLAS  
N S H F L L G T W L D Q A R E V A V S E S E A Q F Y E Q N S R Y Q I T L W G P E G N I L D Y A N K Q  
LAGLVADYYQ PRWCLFLGTL AHSLARGIPF QQHQFEKSVF PLEQAFINN