



TEL:4006-871-227 Web:www.ybio.net Email:shybio@126.com

YB90846Bo01

Prolactin (PRL)

Organism: Bos taurus; Bovine (Cattle)

Instruction manual

FOR IN VITRO USE AND RESEARCH USE ONLY
NOT FOR USE IN DIAGNOSTIC OR THERAPEUTIC PROCEDURES

5th Edition (Revised in January, 2013)

[DESCRIPTION]

Protein Names: Prolactin

Synonyms: PRL

Species: Bovine

Size: 100 μ g

Source: *Escherichia coli* -derived

Subcellular Location: Secreted.

[PROPERTIES]

Residues: Thr31~Cys229 (Accession # P01239), with N-terminal His-Tag.

Grade & Purity: >95%, 26kDa as determined by SDS-PAGE reducing conditions.

Formulation: Supplied as lyophilized form in PBS, pH 7.4, containing 5% sucrose.

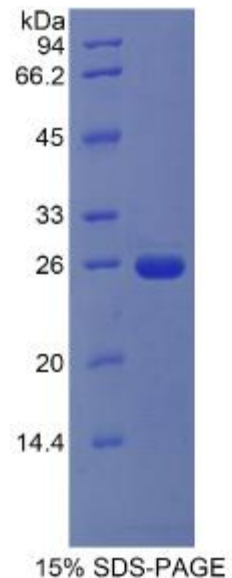
Endotoxin Level: <1.0 EU per 1 μ g (determined by the LAL method).

Applications: SDS-PAGE; WB; ELISA; IP.

(May be suitable for use in other assays to be determined by the end user.)

Predicted Molecular Mass: 24.2kDa

Bovine PRL





TEL:4006-871-227 Web:www.ybio.net

Email:shybio@126.com

Predicted isoelectric point: 6.0



TEL:4006-871-227 Web:www.ybio.net

Email:shybio@126.com

[**PREPARATION**]

Reconstitute in sterile PBS, pH7.2-pH7.4.

[**STORAGE AND STABILITY**]

Storage: Avoid repeated freeze/thaw cycles.

Store at 2-8°C for one month.

Aliquot and store at -80°C for 12 months.

Stability Test: The thermal stability is described by the loss rate of the target protein. The loss rate was determined by accelerated thermal degradation test, that is, incubate the protein at 37°C for 48h, and no obvious degradation and precipitation were observed. (Referring from China Biological Products Standard, which was calculated by the Arrhenius equation.) The loss of this protein is less than 5% within the expiration date under appropriate storage condition.

[**SEQUENCES**]

The target protein is fused with N-terminal His-Tag, its sequence is listed below.

MGHHHHHSGSEF-TPVCPNGPGN CQVSLRDLFD RAVMVSHYIH DLSSEMFNEF
DKRYAQGKGF ITMALNSCHT SSLPTPEDKE QAAQTHHEVL MSLILGLLRS WNDPLYHLVT
EVRGMKGAPD AILSRAIEIE EENKRLLEGM EMIFGQVIPG AKETEPYPVW SGLPSLQTKD
EDARYSAFYN LLHCLRRDSS KIDTYLKLLN CRIIYNNNC