



TEL:4006-871-227 Web:www.ybio.net Email:shybio@126.com

YBB823Rb01 100µg
Recombinant Complement Component 9 (C9)
Organism Species: Oryctolagus cuniculus (Rabbit)
Instruction manual

FOR IN VITRO USE AND RESEARCH USE ONLY
NOT FOR USE IN CLINICAL DIAGNOSTIC PROCEDURES

9th Edition (Revised in Jul, 2013)

[PROPERTIES]

Residues: Pro139~Lys519 (Accession # P48747), with two N-terminal Tags, His-tag and T7-tag.

Host: *E. coli*

Subcellular Location: Secreted. Cell membrane;

Multi-pass membrane protein.

Purity: >95%

Endotoxin Level: <1.0EU per 1µg
(determined by the LAL method).

Formulation: Supplied as lyophilized form in PBS, pH7.4, containing 5% trehalose, 0.01% sarcosyl.

Predicted isoelectric point: 8.7

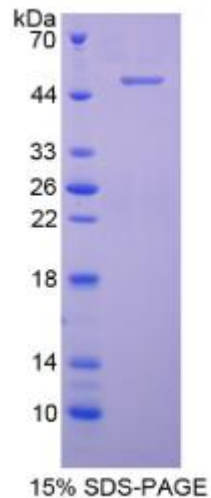
Predicted Molecular Mass: 47.7kDa

Applications: SDS-PAGE; WB; ELISA; IP.

(May be suitable for use in other assays to be determined by the end user.)

[USAGE]

Reconstitute in sterile PBS, pH7.2-pH7.4.





[STORAGE AND STABILITY]

Storage: Avoid repeated freeze/thaw cycles.

Store at 2-8°C for one month.

Aliquot and store at -80°C for 12 months.

Stability Test: The thermal stability is described by the loss rate of the target protein. The loss rate was determined by accelerated thermal degradation test, that is, incubate the protein at 37°C for 48h, and no obvious degradation and precipitation were observed. (Referring from China Biological Products Standard, which was calculated by the Arrhenius equation.) The loss of this protein is less than 5% within the expiration date under appropriate storage condition.

[SEQUENCES]

The target protein is fused with two N-terminal Tags, His-tag and T7-tag, its sequence is listed below.

**MGSSHHHHH SSSLVPRGSH MASMTGGQQM GRGSEFELRR Q- PR LTCRNREVQE
SELARTAGYG INILGMDPLA TPFDNEYHYG LCDRVWDGNT LTHYRKPWNV AVLAYETKID
KNFRTEYYEE QMQAFKSIIE EETSNFNANL ALKFTPTEAK ASKAE EASPK NKSLDDNDKG
FSSKFQFSYS KNETYQLFLS YSSQKEKMFL LVKGIIQLGR FVMKNRGVML TNTFLDDIKS
LPTTYEKGEY FAFLETYGTH YSSGSLGGR YELIYVLDKA SMKEKGIELN DIKKCLGFDL
DLSLNIPGKS AGLSLTGQAN KNNCLKSGHG NAVNITRANL IDVISLIRG GTQKFANELK
EKLLTKAKMV DVTDFINWAS SLSDAPVLIN QKLSPIYNLI PVKIKDAHQK RQNLERGIED
YINEFSTKK**