



TEL:4006-871-227 Web:www.ybio.net Email:shybio@126.com

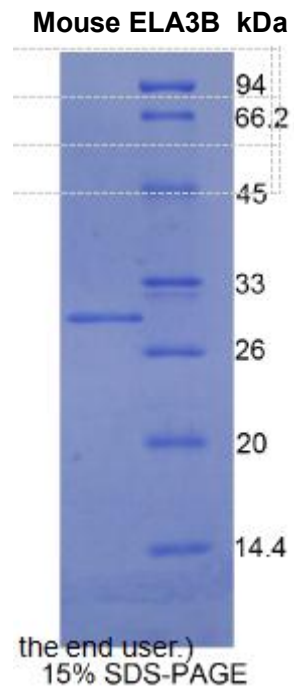
**YB94212Mu01**  
**Elastase 3B (ELA3B)**  
**Organism: Mus musculus (Mouse)**  
***Instruction manual***

FOR IN VITRO USE AND RESEARCH USE ONLY  
NOT FOR USE IN DIAGNOSTIC OR THERAPEUTIC PROCEDURES

5th Edition (Revised in January, 2013)

**[ DESCRIPTION ]**

**Protein Names:** Elastase 3B



**Synonyms:** ELA3B, Cela3b, Ela3

**Species:** Mouse

**Size:** 100µg



TEL:4006-871-227 Web:www.ybio.net Email:shybio@126.com

**Source:** *Escherichia coli* -derived

**[ PROPERTIES ]**

**Residues:** Val28~Ala267 (Accession # Q9CQ52),  
with N-terminal His-Tag.

**Grade & Purity:** >95%, 29kDa as determined by  
SDS-PAGE reducing conditions.

**Formulation:** Supplied as lyophilized form in PBS, pH  
7.4, containing 5% sucrose.

**Endotoxin Level:** <1.0 EU per 1 $\mu$ g (determined by  
the LAL method).

**Applications:** SDS-PAGE; WB; ELISA; IP.

(May be suitable for use in other assays to be determined by the end user.)

**Predicted Molecular Mass:** 27.4kDa

**Predicted isoelectric point:** 5.6



TEL:4006-871-227 Web:www.ybio.net

Email:shybio@126.com

### [ **PREPARATION** ]

Reconstitute in sterile PBS, pH7.2-pH7.4.

### [ **STORAGE AND STABILITY** ]

**Storage: Avoid repeated freeze/thaw cycles.**

Store at 2-8°C for one month.

Aliquot and store at -80°C for 12 months.

**Stability Test:** The thermal stability is described by the loss rate of the target protein. The loss rate was determined by accelerated thermal degradation test, that is, incubate the protein at 37°C for 48h, and no obvious degradation and precipitation were observed. (Referring from China Biological Products Standard, which was calculated by the Arrhenius equation.) The loss of this protein is less than 5% within the expiration date under appropriate storage condition.

### [ **SEQUENCES** ]

The target protein is fused with N-terminal His-Tag, its sequence is listed below.

MGHHHHHSGSEF-VVN GEEAVPHSWP WQVSLQYEKD GSFHHTCGGS LITPDWVLTA  
GHCISTSRTY QVVLGEHERG VEEGQEQVIP INAGDLFVHP KWNSMCVSCG NDIALVKLSR  
SAQLGDAVQL ACLPPAGEIL PNGAPCYISG WGRLSTNGPL PDKLQQALLP VVDYEHCSRW  
NWWGLSVKTT MVCAGGDIQS GCNGDSSGGL NCPADNGTWQ VHGVTSFVSS  
LGCNTRLRKPT VFTRVSAFID WIEETIA