

YB97358Hu01

Plexin B1 (PLXNB1)

Organism: Homo sapiens (Human)

Instruction manual

FOR IN VITRO USE AND RESEARCH USE ONLY

NOT FOR USE IN CLINICAL DIAGNOSTIC  
PROCEDURES

5th Edition (Revised in January, 2013)

**[ DESCRIPTION ]**

Protein Names: Plexin B1

Synonyms: PLXNB1, KIAA0407, PLXN5, SEP

Species: Human

Size: 100-g

Source: Escherichia coli-derived

Subcellular Location: Cell membrane; Single-pass type I  
membrane protein.**[ PROPERTIES ]**Residues: Leu47~Thr173 (Accession # O43157), with N-  
terminal His-Tag.Grade & Purity: >95%, 16kDa as determined by SDS-PAGE  
reducing conditions.Formulation: Supplied as lyophilized form in PBS, pH 7.4,  
containing 5% sucrose, 0.01% sarcosyl.Endotoxin Level: <1.0 EU per 1 $\mu$ g (determined by the LAL  
method).

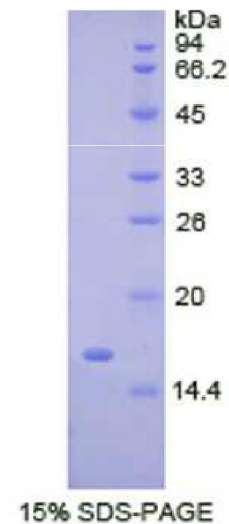
Applications: SDS-PAGE; WB; ELISA; IP.

(May be suitable for use in other assays to be determined by the end user.)

Predicted Molecular Mass: 15.0kDa

Predicted isoelectric point: 5.5

Human PLXNB1





TEL:4006-871-227 Web:www.ybio.net Email:shybio@126.com

### [ PREPARATION ]

Reconstitute in sterile PBS, pH7.2-pH7.4.

### [ STORAGE AND STABILITY ]

Storage: Avoid repeated freeze/thaw cycles.

Store at 2-8°C for one month.

Aliquot and store at -80°C for 12 months.

Stability Test: The thermal stability is described by the loss rate of the target protein. The loss rate was determined by accelerated thermal degradation test, that is, incubate the protein at 37°C for 48h, and no obvious degradation and precipitation were observed. (Referring from China Biological Products Standard, which was calculated by the Arrhenius equation.) The loss of this protein is less than 5% within the expiration date under appropriate storage condition.

### [ SEQUENCES ]

The target protein is fused with N-terminal His-Tag, its sequence is listed below.

MGHHHHHSGSEF- LYLG ATNFLQLSP GLQLEATVST GPVLDSRDCL PPVMPDECPQ  
AQPTNPNQL LLVSPGALVV CGSVHQGVCE QRRLGQLEQL LLRPERPGDT  
QYVAANDPAV STVGLVAQGL AGEPLLFVGR GYT