



TEL:4006-871-227 Web:www.ybio.net Email:shybio@126.com

**YBB929Hu01 50 $\mu$ g**  
**Recombinant Choline Acetyltransferase (ChAT)**  
**Organism Species: Homo sapiens (Human)**

*Instruction manual*

**FOR IN VITRO USE AND RESEARCH USE ONLY**  
**NOT FOR USE IN CLINICAL DIAGNOSTIC PROCEDURES**

10th Edition (Revised in Jan, 2014)

**[ PROPERTIES ]**

**Residues: Asp517~Pro732**

**Tags: Two N-terminal Tags, His-tag and T7-tag**

**Accession: P28329**

**Host: *E. coli***

**Purity: >90%**

**Endotoxin Level: <1.0EU per 1 $\mu$ g**  
**(determined by the LAL method).**

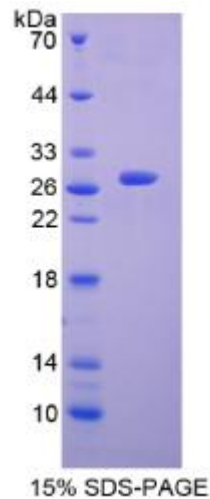
**Formulation: Supplied as lyophilized form in**  
**100mM NaHCO<sub>3</sub>, 500mM NaCl, pH8.3,**  
**containing 1mM EDTA, 1mM DTT, 0.01% sarcosyl,**  
**5% trehalose, and preservative.**

**Predicted isoelectric point: 8.4**

**Predicted Molecular Mass: 28.0kDa**

**Applications: SDS-PAGE; WB; ELISA; IP.**

**(May be suitable for use in other assays to be determined by the end user.)**



**[ USAGE ]**

**Reconstitute in ddH<sub>2</sub>O.**



## **[ STORAGE AND STABILITY ]**

**Storage: Avoid repeated freeze/thaw cycles.**

**Store at 2-8°C for one month.**

**Aliquot and store at -80°C for 12 months.**

**Stability Test: The thermal stability is described by the loss rate of the target protein. The loss rate was determined by accelerated thermal degradation test, that is, incubate the protein at 37°C for 48h, and no obvious degradation and precipitation were observed. (Referring from China Biological Products Standard, which was calculated by the Arrhenius equation.) The loss of this protein is less than 5% within the expiration date under appropriate storage condition.**

## **[ SEQUENCES ]**

**The sequence of the target protein is listed below.**

**DN Y G KT FIK K Q KC S PD A FIQ VA LQ LAF Y RL HR R L VP TY ES A SI R RF Q EG RVD N I  
RSATPEALAF VRAVTDHCAA VPASEKLLLL KDAIRAQTAY TVMAITGMAI DNHLLALREL  
ARAMCKELPE MFMDETYLMS NRFVLSTSQV PTTEMFCCY GPVVPNGYGA CYNPQPETIL  
FCISSFHCK ETSSSKFAKA VEESLIDMRD LCSSLPTES KP**

## **[ REFERENCES ]**

- 1. Oda Y., *et al.* (1992) *Brain Res. Mol. Brain Res.* 16:287-294.**
- 2. Ohno K., *et al.* (2001) *Proc. Natl. Acad. Sci. U.S.A.* 98:2017-2022.**
- 3. Lorenzi M.V., *et al.* (1992) *DNA Cell Biol.* 11:593-603.**
- 4. Toussaint J.L., *et al.* (1992) *Genomics* 12:412-416.**