



TEL:4006-871-227 Web:www.ybio.net Email:shybio@126.com

YBC411Hu01 50µg

Recombinant Cubilin (CUBN)

Organism Species: Homo sapiens (Human)

*Instruction
manual*

FOR IN VITRO USE AND RESEARCH USE ONLY

NOT FOR USE IN CLINICAL DIAGNOSTIC PROCEDURES

11th Edition (Revised in May,
2016)

[PROPERTIES]

Source: Prokaryotic expression.

Host: *E. coli*

Residues: Cys3157~Met3274

Tags: N-terminal His-Tag

Homology: Mouse 70%, rat

70%

Tissue Specificity: Placenta, intestine, kidney.

Subcellular Location: Endosome membrane; Peripheral membrane protein. Lysosome membrane.

Purity: >95%

Endotoxin Level: <1.0EU per 1 µg (determined by the LAL method). **Traits:** Freeze-dried powder

Buffer formulation: PBS, pH7.4, containing 1mM DTT, 5% trehalose, 0.01% sarcosyl and Proclin300.

Original Concentration: 200ug/mL



TEL:4006-871-227 Web:www.ybio.net Email:shybio@126.com

Applications: SDS-PAGE; WB; ELISA; IP; CoIP; Reporter Assays;

Purification; Amine Reactive Labeling.

(May be suitable for use in other assays to be determined by the end user.)

Predicted isoelectric point:

5.5 Predicted Molecular Mass:

14.4kDa

Accurate Molecular Mass: 14kDa as determined by SDS-PAGE reducing conditions.

[USAGE]

Reconstitute in PBS (pH7.4) to a concentration of 0.1-1.0 mg/mL. Do not vortex.

[STORAGE AND STABILITY]

Storage: Avoid repeated freeze/thaw cycles.

Store at 2-8°C for one month.

Aliquot and store at -80°C for 12 months.

Stability Test: The thermal stability is described by the loss rate. The loss rate was determined by accelerated thermal degradation test, that is, incubate the protein at 37°C for 48h, and no obvious degradation and precipitation were observed. The loss rate is less than 5% within the expiration date under appropriate storage condition.

[SEQUENCE]

CGGY LTGSNNTFAS PDSDSNGMYD KNLNCVWIII APVNKVIHLT
FNTFALEAAS TRQRCLYDYV KLYDGDSENA NLAGTFCGST VPAPFISSGN
FLTVQFISDL TLEREGFNAT YTIM

[IDENTIFICATION]

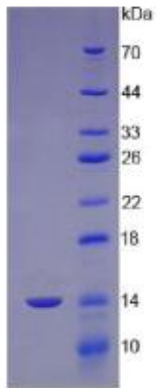


Figure 1. SDS-PAGE