



TEL:4006-871-227 Web:www.ybio.net Email:shybio@126.com

YBD058Ra01 100ug

Recombinant Neutral Sphingomyelinase (NSMASE)

Organism Species: *Rattus norvegicus* (Rat)

Instruction manual

FOR IN VITRO USE AND RESEARCH USE ONLY

NOT FOR USE IN CLINICAL DIAGNOSTIC PROCEDURES

10th Edition (Revised in Jan, 2014)

[PROPERTIES]

Residues: Met1~Ala324

Tags: Two N-terminal Tags, His-tag and GST-tag

Accession: Q9ET64

Host: *E. coli*

Subcellular Location: Membrane. Multi-pass
membrane protein.

Purity: >90%

Endotoxin Level: <1.0EU per 1 μ g (determined by the
LAL method).

Formulation: Supplied as lyophilized form in 20mM

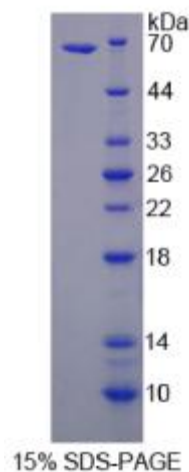
Tris, 150mM NaCl, pH8.0, containing 1mM EDTA, 1mM
DTT, 0.01% sarcosyl, 5% trehalose, and preservative.

Predicted isoelectric point: 7.3

Predicted Molecular Mass: 66.9kDa

Applications: SDS-PAGE; WB; ELISA; IP.

(May be suitable for use in other assays to be determined by the end user.)





TEL:4006-871-227 Web:www.ybio.net Email:shybio@126.com

[USAGE]

Reconstitute in sterile ddH₂O.



[STORAGE AND STABILITY]

Storage: Avoid repeated freeze/thaw cycles.

Store at 2-8°C for one month.

Aliquot and store at -80°C for 12 months.

Stability Test: The thermal stability is described by the loss rate of the target protein. The loss rate was determined by accelerated thermal degradation test, that is, incubate the protein at 37°C for 48h, and no obvious degradation and precipitation were observed. (Referring from China Biological Products Standard, which was calculated by the Arrhenius equation.) The loss of this protein is less than 5% within the expiration date under appropriate storage condition.

[SEQUENCES]

The sequence of the target protein is listed below.

MKHNFSRLRLR VFNLCWDIP YLSKHRADRM KRLGDFLNLE SFDLALLEEV WSEQDFQYLK
QKLSLTYPDA HYFRSGIIGS GLCVFSRHPI QEIVQHVTYL NGYPYKFYHG DWFCGKAVGL
LVLHLSGLVL NAYVTHLHAE YSRQKDIYFA HRVAQAWELA QFIHHTSKKA NVLLCGDLN
MHPKDLGCCL LKEWTGLRDA FVETEDFKGS EDGCTMVPKN CYVSQQDLGP FPFVGRIDYV
LYKAVSGFHI CCKTLKTTTG CDPHNGTPFS DHEALMATLC VKHSPQEDP CSAHGS AERS
ALISALREAR TELGRGIAQA RWWA