



TEL:4006-871-227 Web:www.ybio.net Email:shybio@126.com

YBC778Hu01 100ug

**Recombinant T-Cell Lymphoma Invasion
And Metastasis Inducing Protein 1 (TIAM1)
Organism Species: Homo sapiens (Human)**

Instruction manual

**FOR IN VITRO USE AND RESEARCH USE ONLY
NOT FOR USE IN CLINICAL DIAGNOSTIC PROCEDURES**

10th Edition (Revised in Jan, 2014)

[PROPERTIES]

Residues: Asp1261~Lys1397

Tags: Two N-terminal Tags, His-tag and T7-tag

Accession: Q13009

Host: *E. coli*

**Subcellular Location: Cell junction. Cell membrane;
Peripheral membrane protein; Cytoplasmic side.**

Purity: >95%

**Endotoxin Level: <1.0EU per 1µg (determined by the
LAL method).**

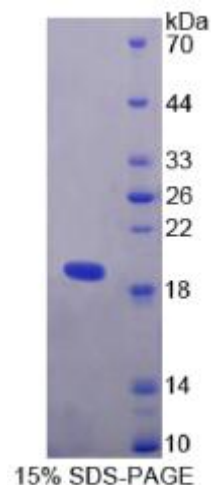
**Formulation: Supplied as lyophilized form in 20mM Tris,
150mM NaCl, pH8.0, containing 1mM EDTA, 1mM DTT,
0.01% sarcosyl, 5% trehalose, and preservative.**

Predicted isoelectric point: 8.8

Predicted Molecular Mass: 19.2kDa

Applications: SDS-PAGE; WB; ELISA; IP.

(May be suitable for use in other assays to be determined by the end user.)



[USAGE]



TEL:4006-
871-227 Web:www.ybio.net
Email:shybio@126.com

Reconstitute in sterile ddH₂O.



TEL:4006-871-227 Web:www.ybio.net

Email:shybio@126.com

[STORAGE AND STABILITY]

Storage: Avoid repeated freeze/thaw cycles.

Store at 2-8°C for one month.

Aliquot and store at -80°C for 12 months.

Stability Test: The thermal stability is described by the loss rate of the target protein. The loss rate was determined by accelerated thermal degradation test, that is, incubate the protein at 37°C for 48h, and no obvious degradation and precipitation were observed. (Referring from China Biological Products Standard, which was calculated by the Arrhenius equation.) The loss of this protein is less than 5% within the expiration date under appropriate storage condition.

[SEQUENCES]

The sequence of the target protein is listed below.

**DLSMGDLLLH TTVIWLNPPA SLGKWKKEPE LAAFVFKTAV VLVYKDGSKQ KKKLVGSHRL
SIYEDWDPFR FRHMIPTAL QVRALASADA EANAVCEIVH VKSESEGRPE RVFHLCCSSP
ESRKDFLKAV HSILRDK**