



YBA348Ra01 100 μ g
Recombinant Cathepsin A (CTSA)
Organism Species: *Rattus norvegicus* (Rat)
Instruction manual

FOR IN VITRO USE AND RESEARCH USE ONLY
NOT FOR USE IN CLINICAL DIAGNOSTIC PROCEDURES

9th Edition (Revised in Jul, 2013)

[PROPERTIES]

Residues: Ala151~Val394 (Accession # Q6AYS3), with two N-terminal Tags, His-tag and GST-tag.

Host: *E. coli*

Purity: >95%

Endotoxin Level: <1.0EU per 1 μ g (determined by the LAL method).

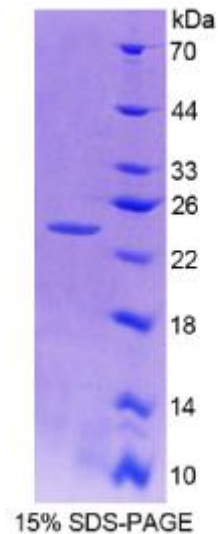
Formulation: Supplied as lyophilized form in PBS, pH7.4, containing 5% sucrose, 0.01% sarcosyl.

Predicted isoelectric point: 6.5 Predicted

Molecular Mass: 59.8kDa

Applications: SDS-PAGE; WB; ELISA; IP.

(May be suitable for use in other assays to be determined by the end user.)





[USAGE]

Reconstitute in sterile PBS, pH7.2-pH7.4.

[STORAGE AND STABILITY]

Storage: Avoid repeated freeze/thaw cycles.

Store at 2-8°C for one month.

Aliquot and store at -80°C for 12 months.

Stability Test: The thermal stability is described by the loss rate of the target protein. The loss rate was determined by accelerated thermal degradation test, that is, incubate the protein at 37°C for 48h, and no obvious degradation and precipitation were observed. (Referring from China Biological Products Standard, which was calculated by the Arrhenius equation.) The loss of this protein is less than 5% within the expiration date under appropriate storage condition.

[SEQUENCES]

The target protein is fused with two N-terminal Tags, His-tag and GST-tag, its sequence is listed below.

MSPILGYWKI KGLVQPTRLL LEYLEEKYEE HLYERDEGDK WRNKKFELGL EFPNLPYYID
GDVKLTQSM A IIRYIADKHN MLGGCPKERA EISMLEGAVL DIRYGVSR IA YSKDFETLKV
DFLSKLP EML KMFEDRLCHK TYLNGDHVTH PDFMLYDALD VVLYMDPMCL DAFPKLVCFK
KRIEAI PQID KYLKSSKYIA WPLQGWA TF GGDHPPKSD GSTSGSGHHH HHHSAGLVPR
GSTAIGMKET AAKAFERQHM DSPDLGTLEV LFGQPLGSEF-ALKDFYHLFP EYKDNKLF LT
GESYAGIYIP TLAVLVMQDP SMNLQGLAVG NGLSSYEQND NSLVYFAYYH GLLGNRLWTS
LQTHCCSQNK CNFYDNKDPD CVNNLQEVSR IVGKSGLN IY NLYAPCAGGV PGRDRSEDTL
VVQDFGNIFT RLPLKRRFPE ALLLRSGDKV RLDPPCTNTT APSTYLNNPY VRKALHIPES
LPRWDMCNLM VNLQYRRLYE SMNSQYLKLL SSQKYQILLY NGDV