



TEL:4006-871-227 Web:www.ybio.net Email:shybio@126.com

YBA131Mu01 50 μ g

Recombinant Transforming Growth Factor Beta Induced Protein (TGF β I)

Organism Species: *Mus musculus* (Mouse)

Instruction manual

FOR IN VITRO USE AND RESEARCH USE ONLY

NOT FOR USE IN CLINICAL DIAGNOSTIC PROCEDURES

11th Edition (Revised in May, 2016)

[PROPERTIES]

Source: Prokaryotic expression.

Host: *E. coli*

Residues: Gly423~Leu632 **Tags:** N-terminal His-Tag

Homology: Human 91%, rat 96%

Tissue Specificity: Brain, heart, liver, kidney.

Subcellular Location: Secreted, extracellular space, extracellular matrix.

Purity: >95%

Endotoxin Level: <1.0EU per 1 μ g (determined by the LAL method). **Traits:** Freeze-dried powder

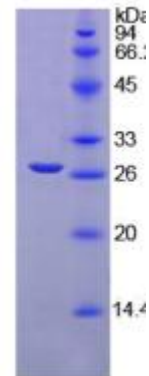
Buffer formulation: 20mM Tris, 150mM NaCl, pH8.0, containing 1mM EDTA, 1mM DTT, 0.01% sarcosyl, 5%Trehalose and Proclin300.

Original Concentration: 200 μ g/mL

Applications: SDS-PAGE; WB; ELISA; IP; CoIP; Reporter Assays;

Purification; Amine Reactive Labeling.

(May be suitable for use in other assays to be determined by the end user.)





TEL:4006-871-227 Web:www.ybio.net Email:shybio@126.com

Predicted isoelectric point: 8.8

Predicted Molecular Mass: 26.9kDa

Accurate Molecular Mass: 28kDa as determined by SDS-PAGE reducing conditions.



TEL:4006-871-227 Web:www.ybio.net

Email:shybio@126.com

[USAGE]

Reconstitute in 20mM Tris, 150mM NaCl (pH8.0) to a concentration of 0.1-1.0 mg/mL. Do not vortex.

[STORAGE AND STABILITY]

Storage: Avoid repeated freeze/thaw cycles.

Store at 2-8°C for one month.

Aliquot and store at -80°C for 12 months.

Stability Test: The thermal stability is described by the loss rate. The loss rate was determined by accelerated thermal degradation test, that is, incubate the protein at 37°C for 48h, and no obvious degradation and precipitation were observed. The loss rate is less than 5% within the expiration date under appropriate storage condition.

[SEQUENCE]

[IDENTIFICATION]



TEL:4006-871-227

Web:www.ybio.net

Email:shybio@126.
com

Figure 1. SDS-PAGE