



TEL:4006-871-227 Web:www.ybio.net Email:shybio@126.com

**YBA560Po01 10 $\mu$ g**  
**Recombinant Epidermal Growth Factor (EGF)**  
**Organism Species: *Sus scrofa*; Porcine (Pig)**  
***Instruction manual***

FOR IN VITRO USE AND RESEARCH USE ONLY  
NOT FOR USE IN CLINICAL DIAGNOSTIC PROCEDURES

10th Edition (Revised in Jan, 2014)

**[ PROPERTIES ]**

**Residues:** Ala45~His275

**Tags:** Two N-terminal Tags, His-tag and S-tag

**Accession:** Q00968

**Host:** *E. coli*

**Subcellular Location:** Membrane; Single-pass  
type I membrane protein.

**Purity:** >95%

**Endotoxin Level:** <1.0EU per 1 $\mu$ g  
(determined by the LAL method).

**Formulation:** Supplied as lyophilized form in 10mM  
PBS, pH7.4, containing 1mM DTT, 5% trehalose,  
0.01% sarcosyl and preservative.

**Predicted isoelectric point:** 5.8

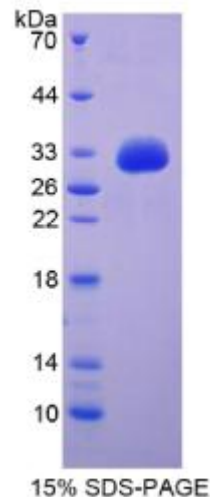
**Predicted Molecular Mass:** 32.1kDa

**Applications:** SDS-PAGE; WB; ELISA; IP.

(May be suitable for use in other assays to be determined by the end user.)

**[ USAGE ]**

Reconstitute in sterile ddH<sub>2</sub>O.





TEL:4006-871-227 Web:www.ybio.net Email:shybio@126.com

## **[ STORAGE AND STABILITY ]**

**Storage: Avoid repeated freeze/thaw cycles.**

Store at 2-8°C for one month.

Aliquot and store at -80°C for 12 months.

**Stability Test:** The thermal stability is described by the loss rate of the target protein. The loss rate was determined by accelerated thermal degradation test, that is, incubate the protein at 37°C for 48h, and no obvious degradation and precipitation were observed. (Referring from China Biological Products Standard, which was calculated by the Arrhenius equation.) The loss of this protein is less than 5% within the expiration date under appropriate storage condition.

## **[ SEQUENCES ]**

The sequence of the target protein is listed below.

APFLIF SHGNSIFRID LEGTNHEQLV ADAGISVLMD FHYNEERIYW VDLERQLLQR  
VFLNGTRQEK VCNLEKNVSG MAINWINEEL IWSNQQEGTI TVTDMKGNNS RVLLSALKYP  
ANVAVDPVER LMFWSSVAVG SLHRADVTGV EVRLLLETSE EIAAVSLDVL DKRFLWQIYN  
REGGSSRICS CDYDGGSVHF SKHLTQHNVF AMSLFGDHIF YSTWKKKTIW VANKH

## **[ REFERENCES ]**

1. Kim J.G., *et al.* (2001) *Domest. Anim. Endocrinol.* 20:253-265.
2. Jorgensen P.E., *et al.* (1998) *Scand. J. Clin. Lab. Invest.* 58:287-298.
3. Pascall J.C., *et al.* (1991) *J. Mol. Endocrinol.* 6:63-70.