



TEL:4006-871-227 Web:www.ybio.net Email:shybio@126.com

**RPJ705Mi01 100µg**  
**Recombinant H2A Histone Family, Member Z (H2AFZ)**  
**Organism Species: Multi-species**  
***Instruction manual***

**FOR IN VITRO USE AND RESEARCH USE ONLY**  
**NOT FOR USE IN CLINICAL DIAGNOSTIC PROCEDURES**

**[ PROPERTIES ]**

**Residues:** Ala2~Val128 (Accession # P0C0S5), with two N-terminal Tags, His-tag and GST-tag.

**Host:** *E. coli*

**Subcellular Location:** Nucleus. Chromosome.

**Purity:** >95%

**Endotoxin Level:** <1.0EU per 1µg (determined by the LAL method).

**Formulation:** Supplied as lyophilized form in PBS, pH7.4, containing 5% trehalose, 0.01% sarcosyl.

**Predicted isoelectric point:** 9.0

**Predicted Molecular Mass:** 45.4kDa

**Applications:** SDS-PAGE; WB; ELISA; IP.

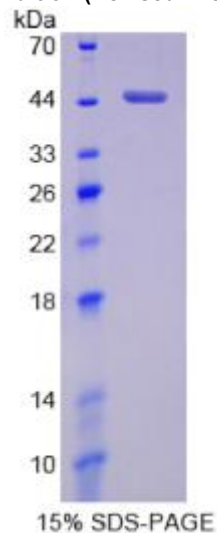
(May be suitable for use in other assays to be determined by the end user.)

**Note:** 100% cross-reactivity of H2AFZ was observed among human, mouse and rat.

**[ USAGE ]**

Reconstitute in sterile PBS, pH7.2-pH7.4.

9th Edition (Revised in Jul, 2013)





TEL:4006-871-227 Web:www.ybio.net Email:shybio@126.com

## **[ STORAGE AND STABILITY ]**

**Storage: Avoid repeated freeze/thaw cycles.**

**Store at 2-8°C for one month.**

**Aliquot and store at -80°C for 12 months.**

**Stability Test:** The thermal stability is described by the loss rate of the target protein. The loss rate was determined by accelerated thermal degradation test, that is, incubate the protein at 37°C for 48h, and no obvious degradation and precipitation were observed. (Referring from China Biological Products Standard, which was calculated by the Arrhenius equation.) The loss of this protein is less than 5% within the expiration date under appropriate storage condition.

## **[ SEQUENCES ]**

**The target protein is fused with two N-terminal Tags, His-tag and GST-tag, its sequence is listed below.**

**MSPILGYWKI KGLVQPTRL L LEYLEEKYEE HLYERDEGDK WRNKKFELGL EFPNLPPYYID  
GDVKLTQSMA IIRYIADKHN MLGGCPKERA EISMLEGAVL DIRYGVSRIA YSKDFETLKV  
DFLSKLP EML KMFEDRLCHK TYLNGDHVTH PDFMLYDALD VVLYMDPMCL DAFPKLVCFK  
KRIEAIQID KYLKSSKYIA WPLQGWQATF GGGDHPPKSD GSTSGSGHHH HHSAGLVPR  
GSTAIGMKET AA AKFERQHM DSPDLGTLEV LFQGPLGSEF-AGGKAGKDS GKAKTKAVSR  
SQRAGLQFPV GRIHRHLKSR TTSHGRVGAT AAVYSAAILE YLTAEVLELA GNASKDLKVK  
RITPRHLQLA IRGDEELDSL IKATIAGGGV IPHIHKSLIG KKGQQKTV**