



TEL:4006-871-227 Web:www.ybio.net Email:shybio@126.com

**YBB406Hu01 250 $\mu$ g**

**Recombinant oligosaccharide Binding Protein (LBP)**

**Organism Species: Homo sapiens (Human)**

*Instruction manual*

FOR IN VITRO USE AND RESEARCH USE ONLY

NOT FOR USE IN CLINICAL DIAGNOSTIC PROCEDURES

11th Edition (Revised in May, 2016)

## [ PROPERTIES ]

**Source:** Prokaryotic expression.

**Host:** *E. coli*

**Residues:** Asn27~Val481

**Tags:** N-terminal His-Tag

**Tissue Specificity:** Liver.

**Subcellular Location:** Secreted.

**Purity:** >95%

**Traits:** Freeze-dried powder

**Buffer formulation:** PBS, pH7.4, containing 1mM DTT, 5% trehalose, 0.01% sarcosyl and Proclin300.

**Original Concentration:** 200 $\mu$ g/mL

**Applications:** SDS-PAGE; WB; ELISA; IP; CoIP; Reporter Assays;

Purification; Amine Reactive Labeling.

(May be suitable for use in other assays to be determined by the end user.)

**Predicted isoelectric point:** 6.4

**Predicted Molecular Mass:** 52.4kDa

**Accurate Molecular Mass:** 52kDa as determined by SDS-PAGE reducing conditions.



TEL:4006-871-227 Web:www.ybio.net Email:shybio@126.com

[ USAGE ]

Reconstitute in PBS (pH7.4) to a concentration of 0.1-1.0 mg/mL. Do not vortex.

[ STORAGE  
AND  
STABILITY ]

S

t  
o  
r  
a  
g  
e  
:

A  
v  
o  
i  
d

r  
e  
p  
e  
a  
t  
e



TEL:4006-871-227

Web:www.ybio.net

Email:shybio@126.  
com

d

f

r

e

e

z

e

/

t

h

a

w

c

y

c

l

e

s

.

S

t

o

r

e



TEL:4006-871-227

Web:www.ybio.net

Email:shybio@126.  
com

a

t

2

-

8

o

C

f

o

r

o

n

e

m

o

n

t

h

.

Aliquot

and

store

at -

80°C



TEL:4006-871-227

Web:www.ybio.net

Email:shybio@126.com

for 12  
months.

### Stability Test:

The thermal stability is described by the loss rate. The loss rate was determined by accelerated thermal degradation test, that is, incubate the protein at 37°C for 48h, and no obvious degradation and precipitation were observed. The

```

                                NPGL VARITDKGLQ YAAQEGLLAL
QSELLRITLP DFTGDLRIPH VGRGRYEFHS LNIHCELLH SALRPVPGQG
LSLSISDSSI RVQGRWKVRK SFFKLQGSFD VSVKGISISV NLLLGSESSG
RPTVTASSCS SDIADVEVDM SGDLGWLLNL FHNQIESKFQ KVLESRICEM
IQKSVSSDLQ PYLQTLPVTT EIDSFADIDY SLVEAPRATA QMLEVMFKGE
IFHRNHRSPV TLLAAVMSLP EEHNKMVYFA ISDYVFNTAS LUYHEEGYLN
FSITDDMIPP DSNIRLTTKS FRPFVPRLAR LYPNMNLELQ GSVPSAPLLN
FSPGNLSVDP YMEIDAFVLL PSSSKEPVFR LSVATNVSAT LTFNTSKITG
FLKPGKVKVE LKESKVGLFN AELLEALLNY YILNTFYPKF NDKLAEGFPL
PLLKRVLQYD LGLQIHKDFL FLGANVQYMR V
```



TEL:4006-871-227

Web:www.ybio.net

Email:shybio@126.com

loss rate is  
less than 5%  
within the  
expiration date  
under  
appropriate  
storage  
condition.

[ SEQUENCE ]

[ IDENTIFICATION ]



TEL:4006-871-227  
Web:www.ybio.net  
Email:shybio@126.com

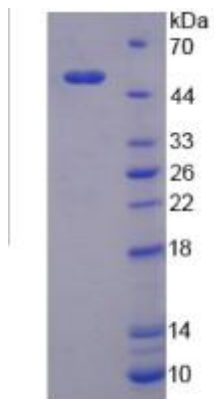


Figure 1. SDS-PAGE