



TEL:4006-871-227 Web:www.ybio.net Email:shybio@126.com

YB84635Ra01 100µg
CUB And Zona Pellucida Like Domains Protein 1 (CUZD1)
Organism: Rattus norvegicus (Rat)
Instruction manual

FOR IN VITRO USE AND RESEARCH USE ONLY
NOT FOR USE IN CLINICAL DIAGNOSTIC PROCEDURES

7th Edition (Revised in May, 2013)

[PROPERTIES]

Residues: Gly257~Val517 (Accession # Q9QZT0), with two N-terminal Tags, His-tag and GST-tag.

Host: *E. coli*

Subcellular Location: Cytoplasmic vesicle, secretory vesicle membrane; Single-pass type I membrane protein.

Purity: >95%

Endotoxin Level: <1.0EU per 1µg (determined by the LAL method).

Formulation: Supplied as lyophilized form in PBS, pH7.4, containing 5% sucrose, 0.01% sarcosyl.

Predicted isoelectric point: 5.9

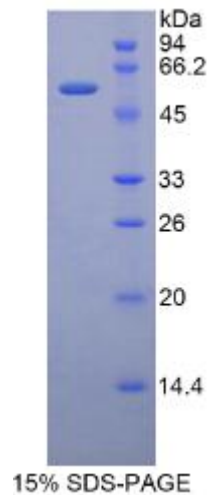
Predicted Molecular Mass: 56.6kDa

Applications: SDS-PAGE; WB; ELISA; IP.

(May be suitable for use in other assays to be determined by the end user.)

[USAGE]

Reconstitute in sterile PBS, pH7.2-pH7.4.





TEL:4006-871-227 Web:www.ybio.net Email:shybio@126.com

[STORAGE AND STABILITY]

Storage: Avoid repeated freeze/thaw cycles.

Store at 2-8°C for one month.

Aliquot and store at -80°C for 12 months.

Stability Test: The thermal stability is described by the loss rate of the target protein. The loss rate was determined by accelerated thermal degradation test, that is, incubate the protein at 37°C for 48h, and no obvious degradation and precipitation were observed. (Referring from China Biological Products Standard, which was calculated by the Arrhenius equation.) The loss of this protein is less than 5% within the expiration date under appropriate storage condition.

[SEQUENCES]

The target protein is fused with two N-terminal Tags, His-tag and GST-tag, its sequence is listed below.

MRNKKFELGL EFPNLPYYID GDVKLTQSMA IIRYIADKHN MLGGCPKERA EISMLEGAVL
DIRYGVSRIA YSKDFETLKV DFLSKLPEML KMFEDRLCHK TYLNGDHVTH PDFMLYDALD
VVLYMDPMCL DAFPKLVCFK KRIEAIPQID KYLKSSKYIA WPLQGQWQATF GGGDHPPKSD
G S T S G S G H H H H H S A G L V P R G S T A I G M K E T A A A K F E R Q H M D S P D L G T L E V
LFQGPLGSEF-GFFA SYASTYVQ EV NTHSLSCASD KMRVIISKSY LQSLNYHESN
LQLNDPTCRP SVSNVVEFSI PLHECGTIKK IEDHTISYTN IITFTQSPES AVITRKRHLQ
IVVTCEMEYN STVEILYITE DDVIQNQSVL GKYNTSMALY ESGSFENLIQ ESPYYVDLNQ
TLFVQATLHT SDPSLVVFLD TCRASPTSDF ASPTYDLISS GCSRDETCEV YPLFGHYGRF
QFNAFKFLRH LSSVYLKCKI LICDTSDHST RCNQGCV