



TEL:4006-871-227 Web:www.ybio.net Email:shybio@126.com

**YB90303Ra01**

**Galectin 3 (GAL3)**

**Organism: Rattus norvegicus (Rat)**

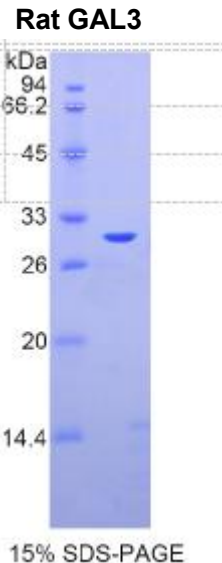
***Instruction manual***

FOR IN VITRO USE AND RESEARCH USE ONLY  
NOT FOR USE IN CLINICAL DIAGNOSTIC PROCEDURES

5th Edition (Revised in January, 2013)

**[ DESCRIPTION ]**

**Protein Names:** Galectin 3



**Synonyms:** GAL3

**Species:** Rat

**Size:** 100 $\mu$ g

**Source:** *Escherichia coli*-derived

**Subcellular Location:** Nucleus, nucleoplasm.

**[ PROPERTIES ]**

**Residues:** Met1~Ile262 (Accession # P08699), with



TEL:4006-871-227 Web:www.ybio.net Email:shybio@126.com

N-terminal His-Tag.

**Grade & Purity:** >95%, 30kDa as determined by SDS-PAGE reducing conditions.

**Formulation:** Supplied as lyophilized form in PBS, pH 7.4, containing 5% sucrose.

**Endotoxin Level:** <1.0 EU per 1 $\mu$ g (determined by the LAL method).

**Applications:** SDS-PAGE; WB; ELISA; IP.

(May be suitable for use in other assays to be determined by the end user.)

**Predicted Molecular Mass:** 28.4kDa

**Predicted isoelectric point:** 8.6



TEL:4006-871-227 Web:www.ybio.net

Email:shybio@126.com

### **[ PREPARATION ]**

Reconstitute in sterile PBS, pH7.2-pH7.4.

### **[ STORAGE AND STABILITY ]**

**Storage: Avoid repeated freeze/thaw cycles.**

Store at 2-8°C for one month.

Aliquot and store at -80°C for 12 months.

**Stability Test:** The thermal stability is described by the loss rate of the target protein. The loss rate was determined by accelerated thermal degradation test, that is, incubate the protein at 37°C for 48h, and no obvious degradation and precipitation were observed. (Referring from China Biological Products Standard, which was calculated by the Arrhenius equation.) The loss of this protein is less than 5% within the expiration date under appropriate storage condition.

### **[ SEQUENCES ]**

The target protein is fused with N-terminal His-Tag, its sequence is listed below.

MGHHHHHSGS- MADGFLNDA LAGSGNPNQ GWPGAWGNQP GAGGYPGASY  
PGAYPGQAPP GGYPGQAPPS AYPGPTGPSA YPGPTAPGAY PGPTAPGAFP  
GQPGGPGAYP SAPGAYPSAP GAYPATGPFG APTGPLTPY DMPLPGGVMP RMLITIIGTV  
KPNANSITLN FKKGNDAFH FNPRFNENNR RVIVCNTKQD NNWGREERQS AFPFESGKPF  
KIQVLVEADH FKVAVNDVHL LQYNHRMKNL REISQLGIIG DITLTSASHA MI

### **[ REFERENCES ]**

1. Gonen T., *et al.* (2001) BMC Cell Biol. 2:17-17.
2. Paret C., *et al.* (2005) Int. J. Cancer 115:724-733.
3. Hikita C., *et al.* (2000) J. Cell Biol. 151:1235-1246.
4. The MGC Project Team. (2004) Genome Res. 14:2121-2127.