



TEL:4006-871-227 Web:www.ybio.net Email:shybio@126.com

YBA741Ra01 50 μ g

Recombinant Dickkopf Related Protein 1 (DKK1)

Organism Species: Rattus norvegicus (Rat)

Instruction manual

FOR IN VITRO USE AND RESEARCH USE ONLY

NOT FOR USE IN CLINICAL DIAGNOSTIC PROCEDURES

10th Edition (Revised in Jan, 2014)

[PROPERTIES]

Residues: Val36~Asn260

Tags: Two N-terminal Tags, His-tag and GST-

Accession: D3Z9J1

Host: *E. coli*

Purity: >95%

Endotoxin Level: <1.0EU per 1 μ g (determined by the LAL method).

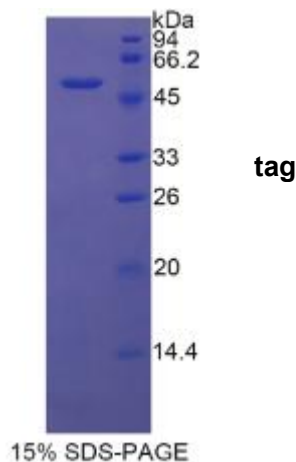
Formulation: Supplied as lyophilized form in 20mM Tris, 500mM NaCl, pH8.0, containing 1mM EDTA, 1mM DTT, 0.01% sarcosyl, 5% trehalose, and preservative.

Predicted isoelectric point: 7.5

Predicted Molecular Mass: 56.3kDa

Applications: SDS-PAGE; WB; ELISA; IP.

(May be suitable for use in other assays to be determined by the end user.)





TEL:4006-871-227 Web:www.ybio.net Email:shybio@126.com

[USAGE]

Reconstitute in ddH₂O.



TEL:4006-871-227 Web:www.ybio.net

Email:shybio@126.com

[STORAGE AND STABILITY]

Storage: Avoid repeated freeze/thaw cycles.

Store at 2-8°C for one month.

Aliquot and store at -80°C for 12 months.

Stability Test: The thermal stability is described by the loss rate of the target protein. The loss rate was determined by accelerated thermal degradation test, that is, incubate the protein at 37°C for 48h, and no obvious degradation and precipitation were observed. (Referring from China Biological Products Standard, which was calculated by the Arrhenius equation.) The loss of this protein is less than 5% within the expiration date under appropriate storage condition.

[SEQUENCES]

The sequence of the target protein is listed below.

VLINS NAIKNLPPPL GGAGGQPGSA VSVAPGVLYE GGNKYQTLDN YQPYPCAEDE
ECGTDEYCSSPSRGAAGVGGVQICLACRKRKRRCMRHAMCCPGNYCKNGI
CMPSDHSHLP RGEIEEGIE NLGNDHGAGD GYPRRTTLTS KIYHTKGQEG SVCLRSSDCA
TGLCCARHFW SKICKPVLKE GQVCTKHRRK GSHGLEIFQR CYCGEGLACR IQKDHHQTSN

[REFERENCES]

1. Florea L., *et al.* (2005) *Genome Res.* 15:54-66.
2. Niehrs C. (2006) *Oncogene* 25:7469-7481.
3. Lin C.L., *et al.* (2010) *J. Am. Soc. Nephrol.* 21:124-135.
4. Weng L.H., *et al.* (2010) *Arthritis Rheum.* 62:1393-1402.