



TEL:4006-871-227 Web:www.ybio.net Email:shybio@126.com

**RPA959Mu01 100 $\mu$ g**  
**Recombinant L1-Cell Adhesion Molecule (L1CAM)**  
**Organism Species: *Mus musculus* (Mouse)**  
***Instruction manual***

**FOR IN VITRO USE AND RESEARCH USE ONLY**  
**NOT FOR USE IN CLINICAL DIAGNOSTIC PROCEDURES**

9th Edition (Revised in Jul, 2013)

**[ PROPERTIES ]**

**Residues: Ser882~Ala1132 (Accession # P11627),**  
**with two N-terminal Tags, His-tag and GST-tag.**

**Host: *E. coli***

**Subcellular Location: Cell membrane;**

**Single-pass type I membrane protein.**

**Purity: >95%**

**Endotoxin Level: <1.0EU per 1 $\mu$ g**  
**(determined by the LAL method).**

**Formulation: Supplied as lyophilized form in PBS,**  
**pH7.4, containing 5% sucrose, 0.01% sarcosyl.**

**Predicted isoelectric point: 6.1**

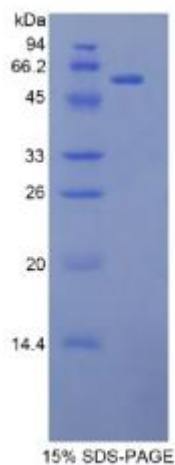
**Predicted Molecular Mass: 59.9kDa**

**Applications: SDS-PAGE; WB; ELISA; IP.**

**(May be suitable for use in other assays to be determined by the end user.)**

**[ USAGE ]**

**Reconstitute in sterile PBS, pH7.2-pH7.4.**





TEL:4006-871-227 Web:www.ybio.net Email:shybio@126.com

## **[ STORAGE AND STABILITY ]**

**Storage: Avoid repeated freeze/thaw cycles.**

**Store at 2-8°C for one month.**

**Aliquot and store at -80°C for 12 months.**

**Stability Test: The thermal stability is described by the loss rate of the target protein. The loss rate was determined by accelerated thermal degradation test, that is, incubate the protein at 37°C for 48h, and no obvious degradation and precipitation were observed. (Referring from China Biological Products Standard, which was calculated by the Arrhenius equation.) The loss of this protein is less than 5% within the expiration date under appropriate storage condition.**

## **[ SEQUENCES ]**

**The target protein is fused with two N-terminal Tags, His-tag and GST-tag, its sequence is listed below.**

**MSPILGYWKI KGLVQPTRL L LEYLEEKYEE HLYERDEGDK WRNKKFELGL EFPNLPYYID  
GDVKLTQSMA IIRYIADKHN MLGGCPKERA EISMLEGAVL DIRYGVSRIA YSKDFETLKV  
DFLSKLP EML KM FEDRLCHK TYLNGDHVTH PDFMLYDALD VVLYMDPMCL DAFPKLVCFK  
KRIEAI PQID KYLKSSKYIA WPLQG WQATF GGGDHPPKSD GSTSGSGHHH HHHSAGLVPR  
GSTAIGMKET AAKFERQHM DSPDLGTLEV LFQGPLGSEF-SGLRPYSSY HVEVQAFNGR  
GLGPASEWTF STPEGVPGHP EALHLECQSD TSLLLHWQPP LSHNGVLTGY LLSYHPVEGE  
SKEQLFFNLS DPELRTHNLT NLNPD LQYRF QLQATTQQGG PGEAIVREGG TMA LFGKPDF  
GNISATAGEN YSVVSWVPRK GQCNFRFHIL FKALPEGKVS PDHQPQPQYV SYNQSSYTQW  
NLQPDTKYEI HLIKEKVLLH HLDVKTN GTG PVRVSTTGSF ASEGWFIAFV SA**