



TEL:4006-871-227 Web:www.ybio.net Email:shybio@126.com

**YBA310Mu01 10 $\mu$ g**

**Recombinant Apolipoprotein H (APOH)**

**Organism Species: Mus musculus (Mouse)**

*Instruction manual*

FOR IN VITRO USE AND RESEARCH USE ONLY

NOT FOR USE IN CLINICAL DIAGNOSTIC PROCEDURES

11th Edition (Revised in May, 2016)

## [ PROPERTIES ]

**Source:** Prokaryotic expression.

**Host:** *E. coli*

**Residues:** Arg21~Cys345

**Tags:** N-terminal His-Tag

**Tissue Specificity:** Liver, Blood.

**Subcellular Location:** Secreted.

**Purity:** >95%

**Traits:** Freeze-dried powder

**Buffer formulation:** 20mM Tris, 150mM NaCl, pH8.0, containing 1mM EDTA, 1mM DTT, 0.01% sarcosyl, 5%Trehalose and Proclin300.

**Original Concentration:** 200ug/mL

**Applications:** SDS-PAGE; WB; ELISA; IP; CoIP; Reporter Assays;

Purification; Amine Reactive Labeling.

(May be suitable for use in other assays to be determined by the end user.)

**Predicted isoelectric point:** 8.5

**Predicted Molecular Mass:** 38.1kDa

**Accurate Molecular Mass:** 38kDa as determined by SDS-PAGE reducing conditions.

## [ USAGE ]

Reconstitute in 20mM Tris, 150mM NaCl (pH8.0) to a concentration of 0.1-1.0 mg/mL. Do not vortex.

## [ STORAGE AND STABILITY ]

**Storage:** Avoid repeated freeze/thaw cycles.

Store at 2-8°C for one month.

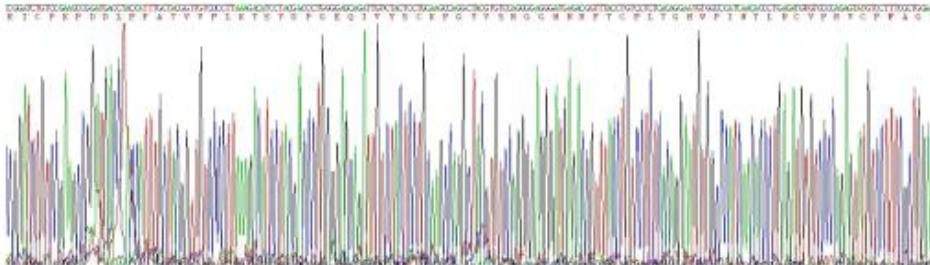
Aliquot and store at -80°C for 12 months.

**Stability Test:** The thermal stability is described by the loss rate. The loss rate was determined by accelerated thermal degradation test, that is, incubate the protein at 37°C for 48h, and no obvious degradation and precipitation were observed. The loss rate is less than 5% within the expiration date under appropriate storage condition.

## [ SEQUENCE ]

```
RICPKPDDL P FATVVPLKTS YDPGEQIVYS  
CKPGYVSRGG MRRFTCPLTG MWPINTLRCV PRVCPFAGIL ENGIVRYTFS  
EYPKNISFAC NPGFFLNGTS SSKCTEEGKW SPDIPACARI TCPPPPVPKF  
ALLKDYRPSA GNNSLYQDTV VFKCLPHFAM IGNDTVMCTE QGNWTRLPEC  
LEVKCPFPPR PENGVVNYPA KPVLLYKDKA TFGCHETYKL DGPEEAECTK  
TGTWSFLPTC RESCKLPVKK ATVLYQGMRV KIQEQFKNGM MHGDKIHFYC  
KNKEKCSYT VEAHCRDGTI EIPSCFKEHS SLAFWKTDAS ELTPC
```

## [ IDENTIFICATION ]



**Figure 1. Gene Sequencing (Extract)**

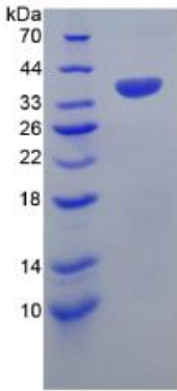


Figure 2. SDS-PAGE