

YB93349Hu01
Interleukin 17 Receptor D (IL17RD)
Organism: Homo sapiens (Human)
Instruction manual

FOR IN VITRO USE AND RESEARCH USE ONLY

NOT FOR USE IN CLINICAL DIAGNOSTIC
PROCEDURES

5th Edition (Revised in January, 2013)

[DESCRIPTION]

Protein Names: Interleukin 17 Receptor D

Synonyms: IL17RD, IL17RLM, SEF

Species: Human

Size: 100*g

Source: Escherichia coli-derived

Subcellular Location: Golgi apparatus membrane; Single-pass type I membrane protein. Cell membrane.

[PROPERTIES]

Residues: Thr157~Arg299 (Accession # Q8NFM7), with N-terminal His-Tag.

Grade & Purity: >95%, 20kDa as determined by SDS-PAGE reducing conditions.

Formulation: Supplied as lyophilized form in PBS, pH 7.4, containing 5% sucrose, 0.01% sarcosyl.

Endotoxin Level: <1.0 EU per 1 μ g (determined by the LAL method).

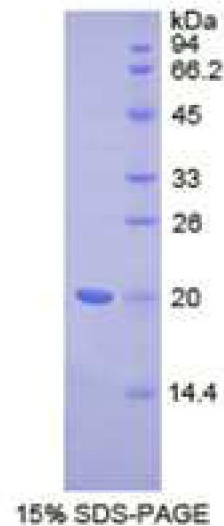
Applications: SDS-PAGE; WB; ELISA; IP.

(May be suitable for use in other assays to be determined by the end user.)

Predicted Molecular Mass: 18.3kDa

Predicted isoelectric point: 8.9

Human IL17RD





TEL:4006-871-227 Web:www.ybio.net Email:shybio@126.com

[PREPARATION]

Reconstitute in sterile PBS, pH7.2-pH7.4.

[STORAGE AND STABILITY]

Storage: Avoid repeated freeze/thaw cycles.

Store at 2-8°C for one month.

Aliquot and store at -80°C for 12 months.

Stability Test: The thermal stability is described by the loss rate of the target protein. The loss rate was determined by accelerated thermal degradation test, that is, incubate the protein at 37°C for 48h, and no obvious degradation and precipitation were observed. (Referring from China Biological Products Standard, which was calculated by the Arrhenius equation.) The loss of this protein is less than 5% within the expiration date under appropriate storage condition.

[SEQUENCES]

The target protein is fused with N-terminal His-Tag, its sequence is listed below.

MGHHHHHSGSEF- TDYF VKVVPFPSIK NESNYHPFFF RTRACDLLLQ PDNLACKPFW
KPRNLNISQH GSDMQVSFDH APHNFGFRFF YLHYCLKHEG PFKRKTCKQE QTTETTSCLL
QNVSPGDYII ELVDDTNTTR KVMHYALKPV HSPWAGPIR