



TEL:4006-871-227 Web:www.ybio.net Email:shybio@126.com

YBA002Bo01 100µg

Recombinant Activated Leukocyte Cell Adhesion Molecule (ALCAM)

Organism Species: Bos taurus; Bovine (Cattle)

Instruction manual

FOR IN VITRO USE AND RESEARCH USE ONLY

NOT FOR USE IN CLINICAL DIAGNOSTIC PROCEDURES

10th Edition (Revised in Jan, 2014)

[PROPERTIES]

Residues: Trp28~Lys527

Tags: Two N-terminal Tags, His-tag and T7-tag

Accession: Q9BH13

Host: *E. coli*

**Subcellular Location: Membrane; Single-pass
type I membrane protein.**

Purity: >95%

**Endotoxin Level: <1.0EU per 1µg (determined by the LAL
method).**

**Formulation: Supplied as lyophilized form in PBS,
pH7.4, containing 5% trehalose, 0.01% sarcosyl.**

Predicted isoelectric point: 5.5

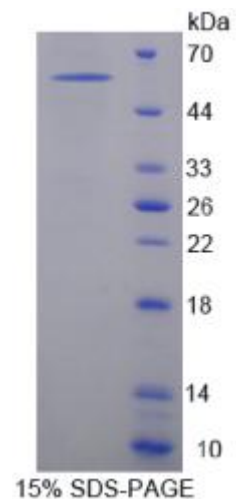
Predicted Molecular Mass: 59.5kDa

Applications: SDS-PAGE; WB; ELISA; IP.

(May be suitable for use in other assays to be determined by the end user.)

[USAGE]

Reconstitute in sterile PBS, pH7.2-pH7.4.





[STORAGE AND STABILITY]

Storage: Avoid repeated freeze/thaw cycles.

Store at 2-8°C for one month.

Aliquot and store at -80°C for 12 months.

Stability Test: The thermal stability is described by the loss rate of the target protein. The loss rate was determined by accelerated thermal degradation test, that is, incubate the protein at 37°C for 48h, and no obvious degradation and precipitation were observed. (Referring from China Biological Products Standard, which was calculated by the Arrhenius equation.) The loss of this protein is less than 5% within the expiration date under appropriate storage condition.

[SEQUENCES]

The sequence of the target protein is listed below.

**WYT VNSAYGD TII MPCRVDVPQ N LMF GKWKYEK PDGSPVFI AF RSSTKKS VQY
DDVPEYKDRL NLS ENY T LSI SNAKISDEKR FVCMLVTEDD VFEAPT VVKV FKQPSKPEIV
SKAPFLET DK LKKLGECISK DSYPDGNITW YRNGKVLQAL EGAVVIIFRK QMDSVTQLYT
MTSSLEYKTT KADIQMPFTC SVTYYGPSGQ KTVYSEQAVF DIYPTEQVT IQVLPSKNAI
KEGDNITLKC LGNGNPPPEE FLFYLPGQPE GIRSSNTYTL TDVKRNATGD YKCSLVDKKS
MIASAAITVH YLDLSLNPSG EVTKQIGDAL PVSCTISASR NATVVWMKDN VKLRSSPSFS
SLHYQDAGNY VCETALQEVE GLKKRESLTL IVEGKPIKM TKKTDPSGLS KTIICHVEGF
PKPAIQWTIT GSGSVINQTE ESPYINGRYY SKIIISPEEN VTLTCTAENQ LERTVNSLNV
SAISIPEHDE ADEISDENKE KVNDQAK**