



TEL:4006-871-227 Web:www.ybio.net Email:shybio@126.com

**YBC010Hu01 100µg**

**Recombinant Protein Z Dependent Protease Inhibitor (ZPI)**

**Organism Species: Homo sapiens (Human)**

***Instruction manual***

**FOR IN VITRO USE AND RESEARCH USE ONLY**

**NOT FOR USE IN CLINICAL DIAGNOSTIC PROCEDURES**

10th Edition (Revised in Jan, 2014)

## **[ PROPERTIES ]**

**Residues: Pro24~Leu444**

**Tags: Two N-terminal Tags, His-tag and GST-tag**

**Accession: Q9UK55**

**Host: *E. coli***

**Subcellular Location: Secreted.**

**Purity: >90%**

**Endotoxin Level: <1.0EU per 1µg (determined by the LAL method).**

**Formulation: Supplied as lyophilized form in PBS, pH7.4, containing 5% trehalose, 0.01% sarcosyl.**

**Predicted isoelectric point: 8.1**

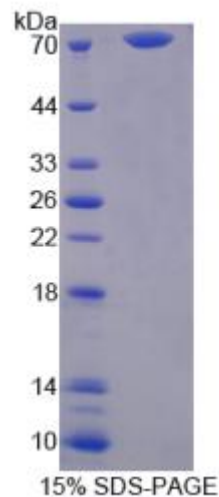
**Predicted Molecular Mass: 78.3kDa**

**Applications: SDS-PAGE; WB; ELISA; IP.**

**(May be suitable for use in other assays to be determined by the end user.)**

## **[ USAGE ]**

**Reconstitute in sterile PBS, pH7.2-pH7.4.**





TEL:4006-871-227 Web:www.ybio.net Email:shybio@126.com

## **[ STORAGE AND STABILITY ]**

**Storage: Avoid repeated freeze/thaw cycles.**

**Store at 2-8°C for one month.**

**Aliquot and store at -80°C for 12 months.**

**Stability Test: The thermal stability is described by the loss rate of the target protein. The loss rate was determined by accelerated thermal degradation test, that is, incubate the protein at 37°C for 48h, and no obvious degradation and precipitation were observed. (Referring from China Biological Products Standard, which was calculated by the Arrhenius equation.) The loss of this protein is less than 5% within the expiration date under appropriate storage condition.**

## **[ SEQUENCES ]**

**The sequence of the target protein is listed below.**

**PSPQSPE TPAPQNQTSR VVQAPKEEEE DEQEASEEKA SEEKAWLMA SRQLAKETS  
NFGFSLLRKI SMRHDGNMVF SPFGMSLAMT GLMLGATGPT ETQIKRGLHL QALKPTKPG  
LPSLFKGLRE TLSRNLELGL TQGSFAFIHK DFDVKETFFN LSKRYFDTEC VPMNFRNASQ  
AKRLMNHYIN KETRGIKPKL FDEINPETKL ILVDYILFKG KWLTPFDPVF TEVDTFHLDK  
YKTIKVPMMY GAGKFASTFD KNFRCHVLKL PYQGNATMLV VLMEKMGDHL ALEDYLTTDL  
VETWLRNMKT RNMEVFFPKF KLDQKYEMHE LLRQMGIRRI FSPFADLSEL SATGRNLQVS  
RVLQRTVIEV DERGTEAVAG ILSEITAYSM PPIKVDRPF HFMIYEETSG MLLFLGRVVN  
PTLL**