



TEL:4006-871-227 Web:www.ybio.net Email:shybio@126.com

**YBF235Ra01 100ug Recombinant Calcium Channel,  
Voltage Dependent, L-Type, Alpha 1S Subunit (CACNa1S)**

**Organism Species: Rattus norvegicus (Rat)**

*Instruction manual*

**FOR IN VITRO USE AND RESEARCH USE ONLY**

**NOT FOR USE IN CLINICAL DIAGNOSTIC PROCEDURES**

10th Edition (Revised in Jan, 2014)

**[ PROPERTIES ]**

**Residues: Gln1554~Ser1767**

**Tags: Two N-terminal Tags, His-tag and T7-tag**

**Accession: Q02485**

**Host: *E. coli***

**Subcellular Location: Cell Membrane. Multi-pass  
Membrane Protein.**

**Purity: >90%**

**Endotoxin Level: <1.0EU per 1µg (determined by the  
LAL method).**

**Formulation: Supplied as lyophilized form in 20mM  
Tris, 150mM NaCl, pH8.0, containing 1mM EDTA,  
1mM DTT, 0.01% sarcosyl, 5% trehalose, and  
preservative.**

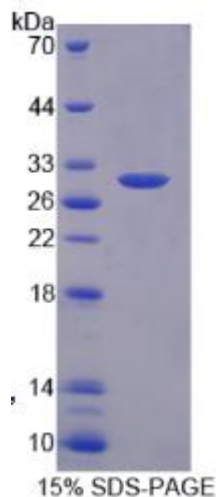
**Predicted isoelectric point: 5.1**

**Predicted Molecular Mass: 27.6kDa**

**Applications: SDS-PAGE; WB; ELISA; IP.**

**(May be suitable for use in other assays to be determined by the end user.)**

**[ USAGE ]**





TEL:4006-  
871-227 Web:www.ybio.net  
Email:shybio@126.com

**Reconstitute in sterile ddH<sub>2</sub>O.**



TEL:4006-871-227 Web:www.ybio.net Email:shybio@126.com

## **[ STORAGE AND STABILITY ]**

**Storage: Avoid repeated freeze/thaw cycles.**

**Store at 2-8°C for one month.**

**Aliquot and store at -80°C for 12 months.**

**Stability Test: The thermal stability is described by the loss rate of the target protein. The loss rate was determined by accelerated thermal degradation test, that is, incubate the protein at 37°C for 48h, and no obvious degradation and precipitation were observed. (Referring from China Biological Products Standard, which was calculated by the Arrhenius equation.) The loss of this protein is less than 5% within the expiration date under appropriate storage condition.**

## **[ SEQUENCES ]**

**The sequence of the target protein is listed below.**

**QIQAGLR TIEEEAAPEI HRAISGDLTA EEELERAMVE AAMEEGIFRR TGGLFGQVDN  
FLERTNSLPP VMANQRPLQF AEMEMEELES PVFLEDFPQN PGTHPLARAN TNNANANVAY  
GNSSHRNSPVFSSIRYERELLE EAGR PV TREG PFSQPCSVSGVNSRSHVD  
KLERQMSQRR MPKGQVPPSP CQLSQEKHPV HEEGKGPRSW STETSDS**