



TEL:4006-871-227 Web:www.ybio.net Email:shybio@126.com

YBD177Hu01 100µg

Recombinant Paraoxonase 2 (PON2)

Organism Species: Homo sapiens (Human)

Instruction manual

**FOR IN VITRO USE AND RESEARCH USE ONLY
NOT FOR USE IN CLINICAL DIAGNOSTIC PROCEDURES**

10th Edition (Revised in Jan, 2014)

[PROPERTIES]

Residues: Met1~Leu354

Tags: Two N-terminal Tags, His-tag and T7-tag

Accession: Q15165

Host: *E. coli*

**Subcellular Location: Membrane; Peripheral
membrane protein.**

Purity: >95%

**Endotoxin Level: <1.0EU per 1µg
(determined by the LAL method).**

**Formulation: Supplied as lyophilized form in PBS,
pH7.4, containing 5% trehalose, 0.01% sarcosyl.**

Predicted isoelectric point: 5.3

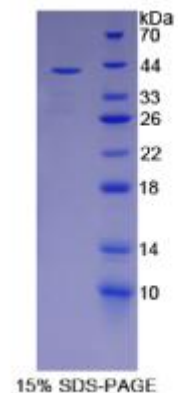
Predicted Molecular Mass: 43.1kDa

Applications: SDS-PAGE; WB; ELISA; IP.

(May be suitable for use in other assays to be determined by the end user.)

[USAGE]

Reconstitute in sterile PBS, pH7.2-pH7.4.





TEL:4006-871-227 Web:www.ybio.net Email:shybio@126.com

[STORAGE AND STABILITY]

Storage: Avoid repeated freeze/thaw cycles.

Store at 2-8°C for one month.

Aliquot and store at -80°C for 12 months.

Stability Test: The thermal stability is described by the loss rate of the target protein. The loss rate was determined by accelerated thermal degradation test, that is, incubate the protein at 37°C for 48h, and no obvious degradation and precipitation were observed. (Referring from China Biological Products Standard, which was calculated by the Arrhenius equation.) The loss of this protein is less than 5% within the expiration date under appropriate storage condition.

[SEQUENCES]

The sequence of the target protein is listed below.

**MGRLVAVGLL GIALALLGER LLALRNRLKA SREVESVDLP HCHLIKGIEA GSEDIDILPN
GLAFFSVGLK FPGLHSFAPD KPGGILMMDL KEEKPRAREL RISRGFDLAS FNPHGISTFI
DNDDTVYLFV VNHPEFKNTV EIFKFEEAEN SLLHLKTVKH ELLPSVNDIT AVGPAHFYAT
NDHYFSDPFL KYLETYLNH WANVVYYSPN EVKVVAEGFD SANGINISPD DKYIYVADIL
AHEIHVLEKH TNMNLTLQKV LELDTLVDNL SIDPSSGDIW VGCHPNGQKL FVYDPNNPPS
SEVLRIQNIL CEKPTVTTVY ANNGSVLQGS SVASVYDGKL LIGTLYHRAL YCEL**