



TEL:4006-871-227 Web:www.ybio.net Email:shybio@126.com

**YB93100Ra01 100µg Low Density Lipoprotein  
Receptor Related Protein Associated Protein 1  
(LRPAP1) Organism: Rattus norvegicus (Rat)**

***Instruction manual***

FOR IN VITRO USE AND RESEARCH USE ONLY  
NOT FOR USE IN CLINICAL DIAGNOSTIC PROCEDURES

7th Edition (Revised in May, 2013)

**[ PROPERTIES ]**

**Residues:** Glu111~Leu360 (Accession # Q99068),  
with N-terminal His-Tag.

**Host:** *E. coli*

**Subcellular Location:** Endoplasmic reticulum.

Cytoplasm. Cell surface.

**Purity:** >95%

**Endotoxin Level:** <1.0EU per 1µg  
(determined by the LAL method).

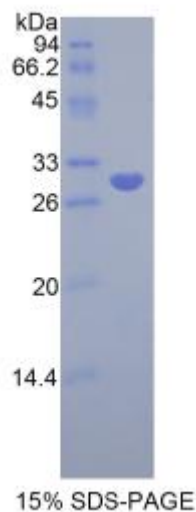
**Formulation:** Supplied as lyophilized form in PBS,  
pH7.4, containing 5% sucrose, 0.01% sarcosyl.

**Predicted isoelectric point:** 6.5

**Predicted Molecular Mass:** 30.9kDa

**Applications:** SDS-PAGE; WB; ELISA; IP.

(May be suitable for use in other assays to be determined by the end user.)



**[ USAGE ]**

Reconstitute in sterile PBS, pH7.2-pH7.4.



TEL:4006-871-227 Web:www.ybio.net Email:shybio@126.com

## [ **STORAGE AND STABILITY** ]

**Storage: Avoid repeated freeze/thaw cycles.**

Store at 2-8°C for one month.

Aliquot and store at -80°C for 12 months.

**Stability Test:** The thermal stability is described by the loss rate of the target protein. The loss rate was determined by accelerated thermal degradation test, that is, incubate the protein at 37°C for 48h, and no obvious degradation and precipitation were observed. (Referring from China Biological Products Standard, which was calculated by the Arrhenius equation.) The loss of this protein is less than 5% within the expiration date under appropriate storage condition.

## [ **SEQUENCES** ]

The target protein is fused with N-terminal His-Tag, its sequence is listed below.

MGHH HHHHSGSEF-EAKLVHN LNV ILARYGLDGR KDTQ TVHSNA LNEDTQ DELG  
DPRLEKLWHK AKTSGKFSSE ELDKLWREFL HYKEKIHEYN VLLDTLSRAE EGYENLLSPS  
DMTHIKSDTL ASKHSELKDR LRSINQGLDR LRKVSHQGYG PATEFEEPRV IDLWDLAQSA  
NFTEKELESF REELKHFEAK IEKHNHYQKQLEISHQKCLKH VESIGDPEHI SRNKEKYVLL  
EEKTKELGYK VKKHLQDLSS RVSRARHNEL