



TEL:4006-871-227 Web:www.ybio.net Email:shybio@126.com

**YBE293Hu01 100µg**

**Recombinant Rac-GTPase Activating Protein 1 (RACGAP1)**

**Organism Species: Homo sapiens (Human)**

***Instruction manual***

**FOR IN VITRO USE AND RESEARCH USE ONLY**

**NOT FOR USE IN CLINICAL DIAGNOSTIC PROCEDURES**

10th Edition (Revised in Jan, 2014)

## **[ PROPERTIES ]**

**Residues: Met106~Trp539**

**Tags: Two N-terminal Tags, His-tag and GST-tag**

**Accession: Q9H0H5**

**Host: *E. coli***

**Subcellular Location: Nucleus, Cytoplasm, cytoskeleton, spindle, Cytoplasmic vesicle, secretory vesicle, acrosome, Cleavage furrow, Midbody, Cell membrane, Peripheral membrane protein, Cytoplasmic side.**

**Purity: >90%**

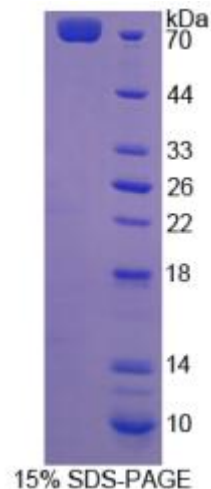
**Endotoxin Level: <1.0EU per 1µg  
(determined by the LAL method).**

**Formulation: Supplied as lyophilized form in PBS, pH7.4, containing 5% trehalose, 0.01% sarcosyl.**

**Predicted isoelectric point: 8.9**

**Predicted Molecular Mass: 78.1kDa**

**Applications: SDS-PAGE; WB; ELISA; IP.**





TEL:4006-871-227 Web:www.ybio.net Email:shybio@126.com

**(May be suitable for use in other assays to be determined by the end user.)**



TEL:4006-871-227 Web:www.ybio.net Email:shybio@126.com

## **[ USAGE ]**

Reconstitute in sterile PBS, pH7.2-pH7.4.

## **[ STORAGE AND STABILITY ]**

Storage: Avoid repeated freeze/thaw cycles.

Store at 2-8°C for one month.

Aliquot and store at -80°C for 12 months.

Stability Test: The thermal stability is described by the loss rate of the target protein. The loss rate was determined by accelerated thermal degradation test, that is, incubate the protein at 37°C for 48h, and no obvious degradation and precipitation were observed. (Referring from China Biological Products Standard, which was calculated by the Arrhenius equation.) The loss of this protein is less than 5% within the expiration date under appropriate storage condition.

## **[ SEQUENCES ]**

The sequence of the target protein is listed below.

MLMCD TSGSIQLSEE QKSALAF LNR GQPSSSNAGN KRLSTIDESG SILSDISFDK  
TDESLDWDSS LVKTFK LKKR EKRRSTSRQF VDGPPGPVKK TRSIGSAVDQ GNESIVAKTT  
VTVPNDDGGPI EAVSTIETVP YWTRSRRKTG TLQPWNSDST LNSRQLEPRT ETDSVGTPQS  
NGGMRLHDFV SKTVIKPESC VPCGKRIKFG KLSLKCRCR VVSHPECRDR CPLPCIPTLI  
GTPVKIGEGM LADFVSQTSP MIPSIVVHCV NEIEQRGLTE TGLYRISGCD RTVKELKEKF  
LRVKTVP LLS KVDDIHAICS LLKDFLRNLK EPLLTFRLNR AFMEAAEITD EDNSIAAMYQ  
AVGELPQANR DTLAFLMIHL QRVAQSPHTK MDVANLAKVF GPTIVAHAVP NPDPVTMLQD  
IKRQPKVVER LLSLPLEYW