



TEL:4006-871-227 Web:www.ybio.net Email:shybio@126.com

YB90938Mu01

Podocin (PDCN)

Organism: *Mus musculus* (Mouse)

Instruction manual

FOR IN VITRO USE AND RESEARCH USE ONLY

NOT FOR USE IN DIAGNOSTIC OR THERAPEUTIC PROCEDURES

5th Edition (Revised in January, 2013)

[**DESCRIPTION**]

Protein Names: Podocin

Synonyms: PDCN, Nphs2

Species: Mouse

Size: 100 μ g

Source: *Escherichia coli*-derived

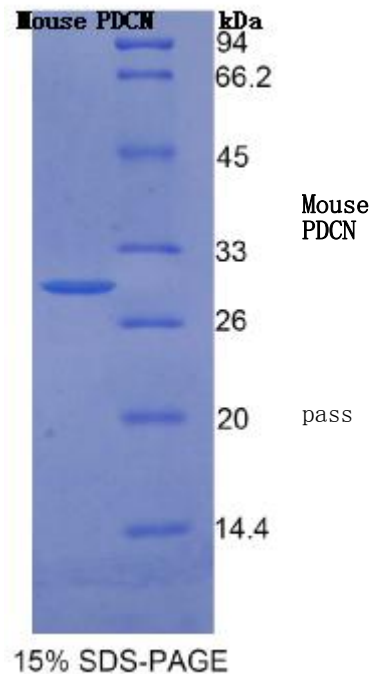
Subcellular Location: Membrane; Single-membrane protein.

[**PROPERTIES**]

Residues: Ile138~Pro371 (Accession # Q91X05), with N-terminal His-Tag.

Grade & Purity: >95%, 30kDa as determined by SDS-PAGE reducing conditions.

Formulation: Supplied as lyophilized form in PBS, pH 7.4, containing 5% sucrose.





TEL:4006-871-227 Web:www.ybio.net Email:shybio@126.com

Endotoxin Level: <1.0 EU per 1 μ g (determined by the LAL method).

Applications: SDS-PAGE; WB; ELISA; IP.

(May be suitable for use in other assays to be determined by the end user.)

Predicted Molecular Mass: 27.4kDa

Predicted isoelectric point: 8.8



TEL:4006-871-227 Web:www.ybio.net Email:shybio@126.com

[PREPARATION]

Reconstitute in sterile PBS, pH7.2-pH7.4.

[STORAGE AND STABILITY]

Storage: Avoid repeated freeze/thaw cycles.

Store at 2-8°C for one month.

Aliquot and store at -80°C for 12 months.

Stability Test: The thermal stability is described by the loss rate of the target protein. The loss rate was determined by accelerated thermal degradation test, that is, incubate the protein at 37°C for 48h, and no obvious degradation and precipitation were observed. (Referring from China Biological Products Standard, which was calculated by the Arrhenius equation.) The loss of this protein is less than 5% within the expiration date under appropriate storage condition.

[SEQUENCES]

The target protein is fused with N-terminal His-Tag, its sequence is listed below.

MGHHHHHSGSEF-IFR LGHLLPGRAK GPGLFFFLPC LDYHKVDLR LQTLEIPFHE
VVTKDMFIME IDAVCYRME NASLLSSLA HVSKAIQFLV QTTMKRLLAH RSLTEILLER
KSIAQDVKVA LDAVTCIWGI KVERTEIKDV RLPAGLQHSL AVEAEAQRQA KVRVIAAEGE
KAASESLRMA AEILSGTPAA VQLRYLHTLQ SLSTEKPATV VLPLPFDMLS LLSSPGNRAQ
GSINYPSSSK P