



TEL:4006-871-227 Web:www.ybio.net Email:shybio@126.com

YBF598Hu01 100 $\mu$ g

Recombinant Metastasis Associated Protein 2 (MTA2)

Organism Species: Homo sapiens (Human)

*Instruction manual*

FOR IN VITRO USE AND RESEARCH USE ONLY

NOT FOR USE IN CLINICAL DIAGNOSTIC PROCEDURES

10th Edition (Revised in Jan, 2014)

## [ PROPERTIES ]

Residues: Met1~Cys394

Tags: Two N-terminal Tags, His-tag and T7-tag

Accession: 094776

Host: *E. coli*

Subcellular Location: Nucleus.

Purity: >90%

Endotoxin Level: <1.0EU per 1 $\mu$ g (determined by the LAL method).

Formulation: Supplied as lyophilized form in PBS, pH7.4, containing 5% trehalose, 0.01% sarcosyl.

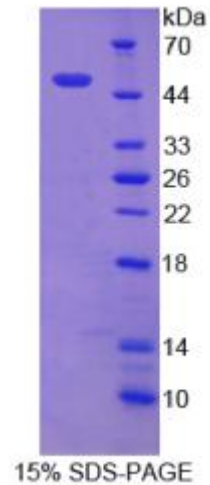
Predicted isoelectric point: 6.0

Predicted Molecular Mass: 48.6kDa

Applications: SDS-PAGE; WB; ELISA; IP.

(May be suitable for use in other assays to be determined by the end user.)

## [ USAGE ]





TEL: 4006-871-227

Web: [www.ybio.net](http://www.ybio.net)

Email: [shybio@126.com](mailto:shybio@126.com)

**Reconstitute in sterile PBS, pH7.2-pH7.4.**



TEL:4006-871-227 Web:www.ybio.net Email:shybio@126.com

## [ STORAGE AND STABILITY ]

Storage: Avoid repeated freeze/thaw cycles.

Store at 2-8°C for one month.

Aliquot and store at -80°C for 12 months.

Stability Test: The thermal stability is described by the loss rate of the target protein. The loss rate was determined by accelerated thermal degradation test, that is, incubate the protein at 37°C for 48h, and no obvious degradation and precipitation were observed. (Referring from China Biological Products Standard, which was calculated by the Arrhenius equation.) The loss of this protein is less than 5% within the expiration date under appropriate storage condition.

## [ SEQUENCES ]

The sequence of the target protein is listed below.

MAANMYRVGD YVYFENSSEN PYLVRRIEEL NKTANGNVEA KVVCLFRRRD ISSSLNSLAD  
SNAREFEEES KQPGVSEQR HQLKHRELF SRQFESLPAT HIRGKCSVTL LNETDILSQY  
LEKEDCFFYS LVFDPVQKTL LADQGEIRVG CKYQAEIPDR LVEGESDNRN QQKMEMKVVD  
PDNPLTDRQI DQFLVVARAV GTFARALDCS SSIRQPSLHM SAAAASRDIT LFHAMDTLQR  
NGYDLAKAMS TLVPGGQVPL CRDEMEEWSA SEAMLFEEAL EKYGKDFNDI RQDFLPWKSL  
ASIVQFYMW KTTDRYIQK RLKAAEADSK LKQVYIPTYT KPNPNQIISV GSKPGMNGAG  
FQKGLTCESC HTTQSAQWYA WPPNMQCRL CASC