



TEL:4006-871-227 Web:www.ybio.net Email:shybio@126.com

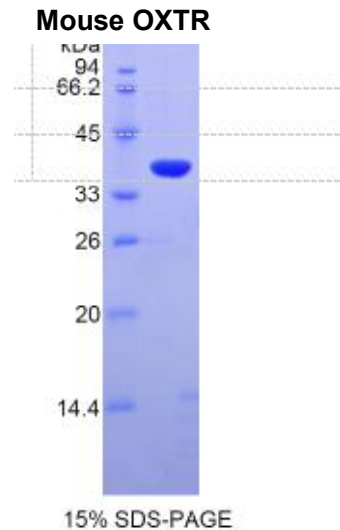
**YB92705Mu01**  
**Oxytocin Receptor (OXTR)**  
**Organism: Mus musculus (Mouse)**  
***Instruction manual***

FOR IN VITRO USE AND RESEARCH USE ONLY  
NOT FOR USE IN CLINICAL DIAGNOSTIC PROCEDURES

5th Edition (Revised in January, 2013)

**[ DESCRIPTION ]**

**Protein Names:** Oxytocin Receptor



**Synonyms:** OXTR

**Species:** Mouse

**Size:** 100 $\mu$ g

**Source:** *Escherichia coli*-derived

**Subcellular Location:** Cell membrane; Multi-pass membrane protein.

**[ PROPERTIES ]**



TEL:4006-871-227 Web:www.ybio.net Email:shybio@126.com

**Residues:** Ala6~Phe75 (Accession # P97926), with two N-terminal Tags, His-tag and GST-tag.

**Grade & Purity:** >95%, 36kDa as determined by SDS-PAGE reducing conditions.

**Formulation:** Supplied as lyophilized form in PBS, pH 7.4, containing 5% sucrose, 0.01% sarcosyl.

**Endotoxin Level:** <1.0 EU per 1 $\mu$ g (determined by the LAL method).

**Applications:** SDS-PAGE; WB; ELISA; IP.

(May be suitable for use in other assays to be determined by the end user.)

**Predicted Molecular Mass:** 34.5kDa

**Predicted isoelectric point:** 6.9



TEL:4006-871-227 Web:www.ybio.net Email:shybio@126.com

### **[ PREPARATION ]**

Reconstitute in sterile PBS, pH7.2-pH7.4.

### **[ STORAGE AND STABILITY ]**

**Storage: Avoid repeated freeze/thaw cycles.**

Store at 2-8°C for one month.

Aliquot and store at -80°C for 12 months.

**Stability Test:** The thermal stability is described by the loss rate of the target protein. The loss rate was determined by accelerated thermal degradation test, that is, incubate the protein at 37°C for 48h, and no obvious degradation and precipitation were observed. (Referring from China Biological Products Standard, which was calculated by the Arrhenius equation.) The loss of this protein is less than 5% within the expiration date under appropriate storage condition.

### **[ SEQUENCES ]**

The target protein is fused with two N-terminal Tags, His-tag and GST-tag, its sequence is listed below.

MRNKKFELGL EFPNLPYYID GDVKLTQSMA IIRYIADKHN MLGGCPKERA EISMLEGAVL  
DIRYGVSRIA YSKDFETLKV DFLSKLPEML KMFEDRLCHK TYLNGDHVTH PDFMLYDALD  
VVLYMDPMCL DAFPKLVCFK KRIEAIPQID KYLKSSKYIA WPLQGWQATF GGDHPPKSD  
GSTSGSGHHH HHHSAGLVPR GSTAIGMKET AAKFERQHM DSPDLGTLEV Lfq  
GPLGSEF- AANWS IELDLGSGVP PGAEGNLTAG PPRRNEALAR VEVAVLCLIL  
FLALSGNACV LLALRTRRHK HSRLF