



TEL:4006-871-227 Web:www.ybio.net Email:shybio@126.com

YBL975Hu01 100µg

Recombinant NUAK Family SNF1 Like Kinase 1 (NUAK1)

Organism Species: Homo sapiens (Human)

Instruction manual

FOR IN VITRO USE AND RESEARCH USE ONLY

NOT FOR USE IN CLINICAL DIAGNOSTIC PROCEDURES

10th Edition (Revised in Jan, 2014)

[PROPERTIES]

Residues: Val421~Ser658

Tags: Two N-terminal Tags, His-tag and T7-tag

Accession: O60285

Host: *E. coli*

Subcellular Location: Cytoplasm . Nucleus.

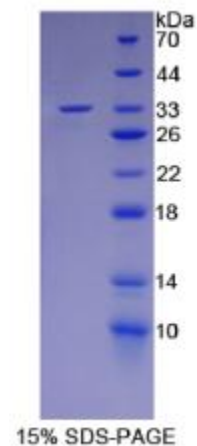
Purity: >95%

Endotoxin Level: <1.0EU per 1µg (determined by the LAL method).

Formulation: Supplied as lyophilized form in PBS, pH7.4, containing 5% trehalose, 0.01% sarcosyl.

Predicted isoelectric point: 6.2 Predicted Molecular Mass: 29.9kDa

Accurate Molecular Mass: 34kDa as determined by SDS-PAGE reducing



The possible reasons that the actual band size differs from the predicted are as follows:
conditions. Applications: SDS-PAGE; WB; ELISA; IP.

(May be suitable for use in other assays to be determined by the end user.)

Note:

- 1. Splice variants: Alternative splicing may create different sized proteins from the same gene.**
- 2. Relative charge: The composition of amino acids may affects the charge of the protein.**
- 3. Post-translational modification: Phosphorylation, glycosylation, methylation etc.**



TEL:4006-871-227 Web:www.ybio.net Email:shybio@126.com

- 4. Post-translation cleavage: Many proteins are synthesized as pro-proteins, and then cleaved to give the active form.**
- 5. Polymerization of the target protein: Dimerization, multimerization etc.**



TEL:4006-871-227 Web:www.ybio.net

Email:shybio@126.com

[USAGE]

Reconstitute in sterile PBS, pH7.2-pH7.4.

[STORAGE AND STABILITY]

Storage: Avoid repeated freeze/thaw cycles.

Store at 2-8°C for one month.

Aliquot and store at -80°C for 12 months.

Stability Test: The thermal stability is described by the loss rate of the target protein. The loss rate was determined by accelerated thermal degradation test, that is, incubate the protein at 37°C for 48h, and no obvious degradation and precipitation were observed. (Referring from China Biological Products Standard, which was calculated by the Arrhenius equation.) The loss of this protein is less than 5% within the expiration date under appropriate storage condition.

[SEQUENCES]

The sequence of the target protein is listed below.

VGPALPSTFK MEQDLCRTGV LLPSSPEAEV PGKLSPKQSA TMPKKGILKK TQQRESGYYS
SPERSESEL LDSNDVMGSS IPSPPPDPA RVTSHSLSCR RKGILKHSSK YSAGTMDPAL
VSPEMPTLES LSEPGVPAEG LRSYSRPSS VISDDSVLSS DDFLLDLQE NRPARQRIRS
CVSAENFLQI QDFEGLQNRP RPQYLKRYRN RLADSSFSLT TDMDDVTQVY KQALEICS