



TEL:4006-871-227 Web:www.ybio.net Email:shybio@126.com

YBH364Hu01 100µg

Recombinant Palate/Lung And Nasal Epithelium Associated Protein (PLUNC)

Organism Species: Homo sapiens (Human)

Instruction manual

FOR IN VITRO USE AND RESEARCH USE ONLY

NOT FOR USE IN CLINICAL DIAGNOSTIC PROCEDURES

10th Edition (Revised in Jan, 2014)

[PROPERTIES]

Residues: Gln20~Val256

Tags: Two N-terminal Tags, His-tag and GST-tag

Accession: Q9NP55

Host: *E. coli*

Subcellular Location: Secreted.

Purity: >90%

Endotoxin Level: <1.0EU per 1µg (determined by the LAL method).

Formulation: Supplied as lyophilized form in PBS, pH7.4, containing 5% trehalose, 0.01% sarcosyl.

Predicted isoelectric point: 5.4

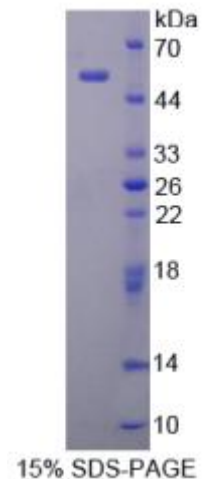
Predicted Molecular Mass: 54.6kDa

Applications: SDS-PAGE; WB; ELISA; IP.

(May be suitable for use in other assays to be determined by the end user.)

[USAGE]

Reconstitute in sterile PBS, pH7.2-pH7.4.





TEL:4006-871-227 Web:www.ybio.net Email:shybio@126.com

[STORAGE AND STABILITY]

Storage: Avoid repeated freeze/thaw cycles.

Store at 2-8°C for one month.

Aliquot and store at -80°C for 12 months.

Stability Test: The thermal stability is described by the loss rate of the target protein. The loss rate was determined by accelerated thermal degradation test, that is, incubate the protein at 37°C for 48h, and no obvious degradation and precipitation were observed. (Referring from China Biological Products Standard, which was calculated by the Arrhenius equation.) The loss of this protein is less than 5% within the expiration date under appropriate storage condition.

[SEQUENCES]

The sequence of the target protein is listed below.

**Q FGGLPVPLDQ TLPLNVNPAL PLSPTGLAGS LTNALSNGLL SGLLGILEN LPLLDILKPG
GGTSGLLGG LLGKVTSVIP GLNNIIDIKV TDPQLELGL VQSPDGHRLY VTIPGLIKLQ
VNTPLVGASL LRLAVKLDIT AEILAVRDKQ ERIHLVLGDC THSPGSLQIS LLDGLGPLPI
QGLDLSLTGI LNKVLPVLVQ GNVCPVNEV LRG LDITLVH DIVN MLIHGL QFVIKIV**