



TEL:4006-871-227 Web:www.ybio.net Email:shybio@126.com

YBC613Mu01 100ug
Recombinant Zuotin Related Factor 1 (ZRF1)
Organism Species: Mus musculus (Mouse)

Instruction manual

FOR IN VITRO USE AND RESEARCH USE ONLY
NOT FOR USE IN CLINICAL DIAGNOSTIC PROCEDURES

10th Edition (Revised in Jan, 2014)

[PROPERTIES]

Residues: Asp368~Lys621

Tags: Two N-terminal Tags, His-tag and T7-tag

Accession: P54103

Host: *E. coli*

Subcellular Location: Cytoplasm, nucleus. Purity:
>90%

Endotoxin Level: <1.0EU per 1µg (determined by the
LAL method).

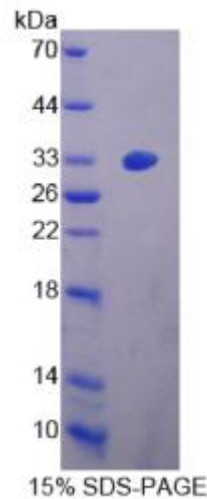
Formulation: Supplied as lyophilized form in 20mM
Tris, 150mM NaCl, pH8.0, containing 1mM EDTA,
1mM DTT, 0.01% sarcosyl, 5% trehalose, and
preservative.

Predicted isoelectric point: 8.6

Predicted Molecular Mass: 32.3kDa

Applications: SDS-PAGE; WB; ELISA; IP.

(May be suitable for use in other assays to be determined by the end user.)



[USAGE]



TEL:4006-

871-227 Web:www.ybio.net

Email:shybio@126.com

Reconstitute in sterile ddH₂O.



[STORAGE AND STABILITY]

Storage: Avoid repeated freeze/thaw cycles.

Store at 2-8°C for one month.

Aliquot and store at -80°C for 12 months.

Stability Test: The thermal stability is described by the loss rate of the target protein. The loss rate was determined by accelerated thermal degradation test, that is, incubate the protein at 37°C for 48h, and no obvious degradation and precipitation were observed. (Referring from China Biological Products Standard, which was calculated by the Arrhenius equation.) The loss of this protein is less than 5% within the expiration date under appropriate storage condition.

[SEQUENCES]

The sequence of the target protein is listed below.

**DN E AD RV K MME E V EK L C D R LE L A SL Q G L N E IL A SS T R E VG K AA LE K Q I E EV N E
QMRREKEEAD ARMRQASKNA EKSTGGSGSG SKNWEDDLQ LLIKAVNLFP AGTNSRWEVI
ANYMNIHSSS GVKRTAKDVI SKAKSLQKLD PHQKDDINKK AFDFKKEHG VASQADSAAP
SERFEGPCID STPWTTEEQK LLEQALKTYP VNTPERWEKI AEAVPGRTKK DCMRRYKELV
EMVKAKKAAQ EQVLNASRAR K**