



TEL:4006-871-227 Web:www.ybio.net Email:shybio@126.com

**YBA821Ra01 50 $\mu$ g**  
**Recombinant C Reactive Protein (CRP)**  
**Organism Species: Rattus norvegicus (Rat)**  
***Instruction manual***

**FOR IN VITRO USE AND RESEARCH USE ONLY**  
**NOT FOR USE IN CLINICAL DIAGNOSTIC PROCEDURES**

9th Edition (Revised in Jul, 2013)

**[ PROPERTIES ]**

**Residues:** His20~Ser230 (Accession # P48199), with two  
N-terminal Tags, His-tag and T7-tag.

**Host:** *E. coli*

**Subcellular Location:** Secreted.

**Purity:** >95%

**Endotoxin Level:** <1.0EU per 1 $\mu$ g  
(determined by the LAL method).

**Formulation:** Supplied as lyophilized form in 20mM Tris,  
150mM NaCl, pH8.0, containing 1mM EDTA, 1mM DTT,  
0.01% sarcosyl, 5% trehalose, and preservative.

**Predicted isoelectric point:** 5.7

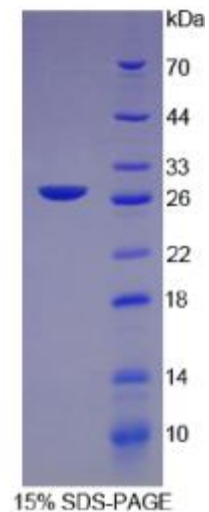
**Predicted Molecular Mass:** 27.1kDa

**Applications:** SDS-PAGE; WB; ELISA; IP.

(May be suitable for use in other assays to be determined by the end user.)

**[ USAGE ]**

Reconstitute in ddH<sub>2</sub>O.





## **[ STORAGE AND STABILITY ]**

**Storage: Avoid repeated freeze/thaw cycles.**

**Store at 2-8°C for one month.**

**Aliquot and store at -80°C for 12 months.**

**Stability Test:** The thermal stability is described by the loss rate of the target protein. The loss rate was determined by accelerated thermal degradation test, that is, incubate the protein at 37°C for 48h, and no obvious degradation and precipitation were observed. (Referring from China Biological Products Standard, which was calculated by the Arrhenius equation.) The loss of this protein is less than 5% within the expiration date under appropriate storage condition.

## **[ SEQUENCES ]**

The target protein is fused with two N-terminal Tags, His-tag and T7-tag, its sequence is listed below.

MGSSHHHHH SSSLVPRGSH MASMTGGQQM GRGSEF- H EDMSKQAFVF PGVSATAYVS  
LEAESKKPLE AFTVCLYAHA DVSRFSIFS YATKTSFNEI LLFWTRGQGF SIAVGGPEIL  
FSASEIPEVP THICATWESA TGIVELWLDG KPRVRKSLQK GYIVGTNASI ILGQEQDSYG  
GGFDANQSLV GDIGDVMWD FVLSPEQINA VYVGRVFSFN VLNWRALKYE THGDVFIKPK  
LWPLTDCCES

## **[ REFERENCES ]**

1. Rassouli M., *et al.* (1992) *J. Biol. Chem.* 267:2947-2954.
2. Szalai A.J., *et al.* (2002) *Genes Immun.* 3:14-19.
3. Kose K., *et al.* (2002) *Tohoku J. Exp. Med.* 197:9-16.
4. Diaz Padilla N., *et al.* (2003) *Immunology* 109:564-571.