



TEL:4006-871-227 Web:www.ybio.net Email:shybio@126.com

YBQ372Hu01 100 $\mu$ g

Recombinant Adipocyte Plasma Membrane Associated Protein (APMAP)

Organism Species: Homo sapiens (Human)

*Instruction  
manual*

FOR IN VITRO USE AND RESEARCH USE ONLY

NOT FOR USE IN CLINICAL DIAGNOSTIC PROCEDURES

10th Edition (Revised in Jan, 2014)

## [ PROPERTIES ]

Residues: Glu62~Arg289

Tags: Two N-terminal Tags, His-tag and T7-tag

Accession: Q9HDC9

Host: *E. coli*

Subcellular Location: Membrane; Single-pass

type II membrane protein.

Purity: >95%

Endotoxin Level: <1.0EU per 1 $\mu$ g (determined by the LAL method).

Formulation: Supplied as lyophilized form in PBS,

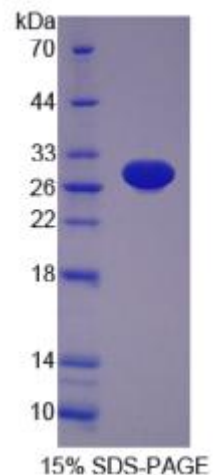
pH7.4, containing 5% trehalose, 0.01% sarcosyl.

Predicted isoelectric point: 5.6

Predicted Molecular Mass: 29.2kDa

Applications: SDS-PAGE; WB; ELISA; IP.

(May be suitable for use in other assays to be determined by the end user.)





TEL:4006-871-227 Web:www.ybio.net Email:shybio@126.com

[ USAGE ]

Reconstitute in sterile PBS, pH7.2-pH7.4.



TEL:4006-871-227 Web:www.ybio.net Email:shybio@126.com

## [ STORAGE AND STABILITY ]

Storage: Avoid repeated freeze/thaw cycles.

Store at 2-8°C for one month.

Aliquot and store at -80°C for 12 months.

Stability Test: The thermal stability is described by the loss rate of the target protein. The loss rate was determined by accelerated thermal degradation test, that is, incubate the protein at 37°C for 48h, and no obvious degradation and precipitation were observed. (Referring from China Biological Products Standard, which was calculated by the Arrhenius equation.) The loss of this protein is less than 5% within the expiration date under appropriate storage condition.

## [ SEQUENCES ]

The sequence of the target protein is listed below.

ESPIDPQL SFKEPLLLG VLPNTKLRQ AERLFENQLV GPESIAHIGD VMFTGTADGR  
VVKLENGEIE TIARFGSGPC KTRDDEPVCV RPLGIRAGPN GTLFVADAYK GLFEVNPWKR  
EVKLLSSET PIEGKNMSFV NDLTVTQDGR KIYFTDSSSK WQRRDYLLLV MEGTDDGRLL  
EYDVTREVK VLLDQLRFPN GVQLSPAEDF VLVAETTMAR IRSSLVKRR