



TEL:4006-871-227 Web:www.ybio.net Email:shybio@126.com

**YB97574Ra
01**

N-Acetylgalactosaminidase Alpha (NAGa)

Organism: Rattus norvegicus (Rat)

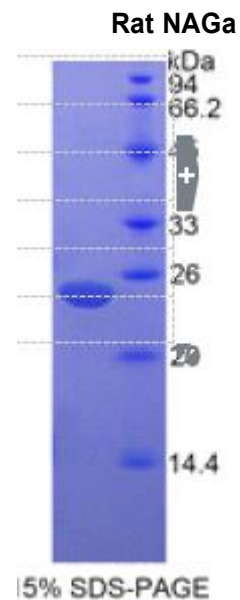
Instruction manual

FOR IN VITRO USE AND RESEARCH USE ONLY
NOT FOR USE IN CLINICAL DIAGNOSTIC PROCEDURES

5th Edition (Revised in January, 2013)

[DESCRIPTION]

Protein Names: N-Acetylgalactosaminidase Alpha



Synonyms: NAGa

Species: Rat

Size: 100µg

Source: *Escherichia coli*-derived



TEL:4006-871-227 Web:www.ybio.net Email:shybio@126.com

Subcellular Location: Lysosome.

[PROPERTIES]

Residues: Leu18~Asp217 (Accession # Q66H12),
with N-terminal His-Tag.

Grade & Purity: >95%, 25kDa as determined by
SDS-PAGE reducing conditions.

Formulation: Supplied as lyophilized form in PBS, pH
7.4, containing 5% sucrose, 0.01% sarcosyl.

Endotoxin Level: <1.0 EU per 1 μ g (determined by
the LAL method).

Applications: SDS-PAGE; WB; ELISA; IP.

(May be suitable for use in other assays to be determined by the end user.)

Predicted Molecular Mass: 24.1kDa

Predicted isoelectric point: 5.7



TEL:4006-871-227 Web:www.ybio.net

Email:shybio@126.com

[PREPARATION]

Reconstitute in sterile PBS, pH7.2-pH7.4.

[STORAGE AND STABILITY]

Storage: Avoid repeated freeze/thaw cycles.

Store at 2-8°C for one month.

Aliquot and store at -80°C for 12 months.

Stability Test: The thermal stability is described by the loss rate of the target protein. The loss rate was determined by accelerated thermal degradation test, that is, incubate the protein at 37°C for 48h, and no obvious degradation and precipitation were observed. (Referring from China Biological Products Standard, which was calculated by the Arrhenius equation.) The loss of this protein is less than 5% within the expiration date under appropriate storage condition.

[SEQUENCES]

The target protein is fused with N-terminal His-Tag, its sequence is listed below.

MGHHHHHSGSEF- LEN GLLRTPPMGW LAWERFRCNI NCEEDPKNCI SERLFMEMAD
RLAQDGWRDL GYVYLNIDDC WIGGRDATGR LIPDPKRFPH GIAFLADYAH SLGLKLG IYE
DMGKMTCMGY PGTTLDKVEL DAATFAEWKV DMLKLDGCYS TPKERAEGYP
KMAAALNATG RPIAFSCSWP AYEGGLPPKV NYTEVAGTCN LWRNYKD