



TEL:4006-871-227 Web:www.ybio.net Email:shybio@126.com

YBG754Hu01 100µg
Recombinant TNF Receptor Associated Factor 4 (TRAF4)
Organism Species: Homo sapiens (Human)
Instruction manual

FOR IN VITRO USE AND RESEARCH USE ONLY
NOT FOR USE IN CLINICAL DIAGNOSTIC PROCEDURES

9th Edition (Revised in Jul, 2013)

[PROPERTIES]

Residues: Gln193~Asp444 (Accession # Q9BUZ4), with two N-terminal Tags, His-tag and T7-tag.

Host: *E. coli*

Subcellular Location: Cytoplasm. Nucleus.

Perinuclear region. Cell junction, tight junction.

Cell membrane; Peripheral membrane protein;

Cytoplasmic side. Cytoskeleton.

Purity: >95%

Endotoxin Level: <1.0EU per 1µg
(determined by the LAL method).

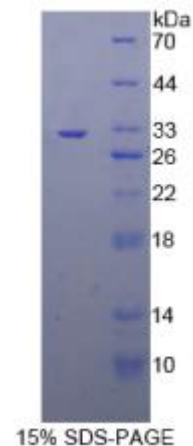
Formulation: Supplied as lyophilized form in PBS,
pH7.4, containing 5% sucrose, 0.01% sarcosyl.

Predicted isoelectric point: 8.5

Predicted Molecular Mass: 32.2kDa

Applications: SDS-PAGE; WB; ELISA; IP.

(May be suitable for use in other assays to be determined by the end user.)



[USAGE]



TEL:4006-871-227

Web:www.ybio.net

Email:shybio@126.com

Reconstitute in sterile PBS, pH7.2-pH7.4.



TEL:4006-871-227 Web:www.ybio.net

Email:shybio@126.com

[STORAGE AND STABILITY]

Storage: Avoid repeated freeze/thaw cycles.

Store at 2-8°C for one month.

Aliquot and store at -80°C for 12 months.

Stability Test: The thermal stability is described by the loss rate of the target protein. The loss rate was determined by accelerated thermal degradation test, that is, incubate the protein at 37°C for 48h, and no obvious degradation and precipitation were observed. (Referring from China Biological Products Standard, which was calculated by the Arrhenius equation.) The loss of this protein is less than 5% within the expiration date under appropriate storage condition.

[SEQUENCES]

The target protein is fused with two N-terminal Tags, His-tag and T7-tag, its sequence is listed below.

**MGSSHHHHH SSSLVPRGSH MASMTGGQQM GRGSEF- QPCTYCTK EFVFDTIQSH
QYQCPRLPVA CPNQCGVGTV AREDLPGHLK DSCNTALVLC PFKDSGCKHR CPKLAMARHV
EESVKPHLAM MCALVSRQRQ ELQELRRELE ELSVGS DGVL IWKIGSYGRR LQEAKAKPNL
ECFSPAFYTH KYGYKLQVSA FLNGNGSGEG THLSLYIRVL PGAFDNLLEW PFARRVTFSL
LDQSDPGLAK PQHVTETFHP DPNWKNFQKP GTWRGSLDES SLGFGYPKFI SHQD**