



TEL:4006-871-227 Web:www.ybio.net Email:shybio@126.com

YB94680Hu01 100µg
FK506 Binding Protein 10 (FKBP10)
Organism: Homo sapiens (Human)
Instruction manual

FOR IN VITRO USE AND RESEARCH USE ONLY
NOT FOR USE IN CLINICAL DIAGNOSTIC PROCEDURES

7th Edition (Revised in May, 2013)

[PROPERTIES]

Residues: Val158~Asp440 (Accession # Q96AY3)
with N-terminal His-Tag.

Host: *E. coli*

Subcellular Location: Endoplasmic reticulum
lumen.

Purity: >95%

Endotoxin Level: <1.0EU per 1µg
(determined by the LAL method).

Formulation: Supplied as lyophilized form in PBS,
pH7.4, containing 5% sucrose, 0.01% sarcosyl.

Predicted isoelectric point: 6.1

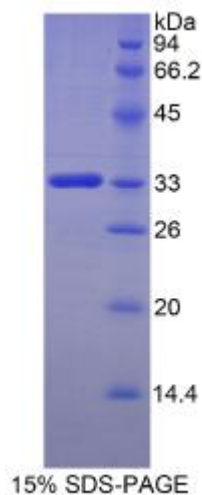
Predicted Molecular Mass: 32.7kDa

Applications: SDS-PAGE; WB; ELISA; IP.

(May be suitable for use in other assays to be determined by the end user.)

[USAGE]

Reconstitute in sterile PBS, pH7.2-pH7.4.





TEL:4006-871-227 Web:www.ybio.net Email:shybio@126.com

[STORAGE AND STABILITY]

Storage: Avoid repeated freeze/thaw cycles.

Store at 2-8°C for one month.

Aliquot and store at -80°C for 12 months.

Stability Test: The thermal stability is described by the loss rate of the target protein. The loss rate was determined by accelerated thermal degradation test, that is, incubate the protein at 37°C for 48h, and no obvious degradation and precipitation were observed. (Referring from China Biological Products Standard, which was calculated by the Arrhenius equation.) The loss of this protein is less than 5% within the expiration date under appropriate storage condition.

[SEQUENCES]

The target protein is fused with N-terminal His-Tag, its sequence is listed below.

MGHHHHHSG SEF-VST LLRPPHCPRM VQDGFVRYH YNGTLLDGTS FDTSYSKGGT
YDTYVGSOWL IKGMDQQLL MCPGERRKII IPPFLAYGEK GYGTVIPPQA SLVFHVLLID
VHNPKDAVQL ETELEPPGCV RRAGAGDFMR YHYNGSLMDG TLFDSYSRN HTYNTYIGQG
YIIPGMDQGL QGACMGERRR ITIPPHLAYG ENGTGDKIPG SAVLIFNVHV IDFHNPADV
EIRTLRPSE TCNETTKLGD FVRYHYNCSL LDGTQLFTSH DYGAPQEATL GANKVIEGLD