



TEL:4006-871-227 Web:www.ybio.net Email:shybio@126.com

**YBA079Hu01 10 $\mu$ g**  
**Recombinant Interleukin 6 (IL6)**  
**Organism Species: Homo sapiens (Human)**  
***Instruction manual***

**FOR IN VITRO USE AND RESEARCH USE ONLY**  
**NOT FOR USE IN CLINICAL DIAGNOSTIC PROCEDURES**

9th Edition (Revised in Jul, 2013)

**[ PROPERTIES ]**

**Residues: Pro29~Met212 (Accession # P05231),**  
**with N-terminal GST-Tag.**

**Host: *E. coli***

**Subcellular Location: Secreted.**

**Purity: >95%**

**Endotoxin Level: <1.0EU per 1 $\mu$ g**  
**(determined by the LAL method).**

**Formulation: Supplied as lyophilized form in 20mM**  
**Tris, 500mM NaCl, pH8.0, containing 1mM EDTA, 1mM**  
**DTT, 0.01% sarcosyl, 5% trehalose, and preservative.**

**Predicted isoelectric point: 6.0**

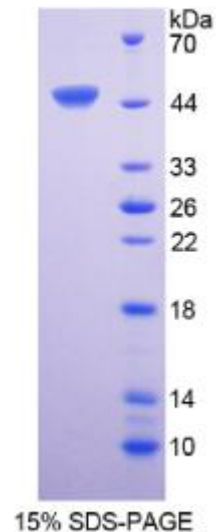
**Predicted Molecular Mass: 47.1kDa**

**Applications: SDS-PAGE; WB; ELISA; IP.**

**(May be suitable for use in other assays to be determined by the end user.)**

**[ USAGE ]**

**Reconstitute in sterile PBS, pH7.2-pH7.4.**





## **[ STORAGE AND STABILITY ]**

**Storage: Avoid repeated freeze/thaw cycles.**

**Store at 2-8°C for one month.**

**Aliquot and store at -80°C for 12 months.**

**Stability Test:** The thermal stability is described by the loss rate of the target protein. The loss rate was determined by accelerated thermal degradation test, that is, incubate the protein at 37°C for 48h, and no obvious degradation and precipitation were observed. (Referring from China Biological Products Standard, which was calculated by the Arrhenius equation.) The loss of this protein is less than 5% within the expiration date under appropriate storage condition.

## **[ SEQUENCES ]**

The target protein is fused with N-terminal GST-Tag, its sequence is listed below.

MSPILGYWKI KGLVQPTRLLEYLEEKYEE HLYERDEGDK WRNKKFELGL EFPNLPYYID  
GDVKLTQSMA IIRYIADKHN MLGGCPKERA EISMLEGAVL DIRYGVSRIA YSKDFETLKV  
DFLSKLP EML KM FEDRLCHK TYLNGDHVTH PDFMLYDALD VVLYMDPMCL DAFPKLVCFK  
KRIEAIQID KYLKSSKYIA WPLQG WQATF GGGDHPPKSD GGPLGS-PV PPGEDSKDVA  
APHRQPLTSS ERIDKQIRYI LDGISALRKE TCNKS NMCES SKEAL AENNL NLPKMAEKDG  
CFQSGFNEET CLVKIITGLL EFEVYLEYLQ NRFESSEEQA RAVQMSTKVL IQFLQKKAKN  
LDAITTPDPT TNASLLTKLQ AQNQWLQDMT THLILRSFKE FLQSSLRALR QM

## **[ REFERENCES ]**

1. Kobayashi K., *et al.* (2012) *Int. J. Mol. Med.* 30:509-513.
2. Liu Y., *et al.* (2012) *Genet Test Mol Biomarkers* 16:822-826.
3. Dilli D., Dilmen U. (2012) *J Clin Res Pediatr Endocrinol* 4:66-71.
4. Titov B.V., *et al.* (2012) *Mol. Biol. (Mosk.)* 46:93-102.