



TEL:4006-871-227 Web:www.ybio.net Email:shybio@126.com

YB93105Hu01

100µg Low Density Lipoprotein Receptor Related Protein 6 (LRP6)

Organism: Homo sapiens (Human)

Instruction manual

FOR IN VITRO USE AND RESEARCH USE ONLY
NOT FOR USE IN CLINICAL DIAGNOSTIC PROCEDURES

7th Edition (Revised in May, 2013)

[PROPERTIES]

Residues: Trp981~Gly1213 (Accession # O75581), with two N-terminal Tags, His-tag and T7-tag.

Host: *E. coli*

Subcellular Location: Membrane; Single-pass type I membrane protein. Endoplasmic reticulum.

Purity: >95%

Endotoxin Level: <1.0EU per 1µg (determined by the LAL method).

Formulation: Supplied as lyophilized form in PBS, pH7.4, containing 5% sucrose, 0.01% sarcosyl.

Predicted isoelectric point: 6.3

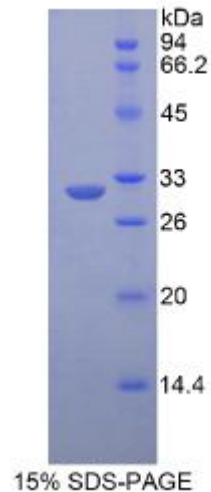
Predicted Molecular Mass: 30.4kDa

Applications: SDS-PAGE; WB; ELISA; IP.

(May be suitable for use in other assays to be determined by the end user.)

[USAGE]

Reconstitute in sterile PBS, pH7.2-pH7.4.





TEL:4006-871-227 Web:www.ybio.net Email:shybio@126.com

[**STORAGE AND STABILITY**]

Storage: Avoid repeated freeze/thaw cycles.

Store at 2-8°C for one month.

Aliquot and store at -80°C for 12 months.

Stability Test: The thermal stability is described by the loss rate of the target protein. The loss rate was determined by accelerated thermal degradation test, that is, incubate the protein at 37°C for 48h, and no obvious degradation and precipitation were observed. (Referring from China Biological Products Standard, which was calculated by the Arrhenius equation.) The loss of this protein is less than 5% within the expiration date under appropriate storage condition.

[**SEQUENCES**]

The target protein is fused with two N-terminal Tags, His-tag and T7-tag, its sequence is listed below.

MGSSHHHHHH SGLVPRGSH MASMTGGQQM GRGSEF-WIDSRQNMIR KAQEDGSQGF
TVVVSSVPSQ NLEIQPYDLS IDIYSRYIYW TCEATNVINV TRLDGRSVGV VLKGEQDRPR
AVVVNPEKGY MYFTNLQERS PKIERAALDG TEREVLFFSG LSKPIALALD SRLGKLFWAD
SDLRRISSD LSGANRIVLE DSNILQPVGL TVFENWLYWI DKQQQMIEKI DMTGREGRTK
VQARIAQLSD IHAVKELNLQ EYRQHPCAQD NGG