



TEL:4006-871-227 Web:www.ybio.net Email:shybio@126.com

YBC143Hu01 100µg
Recombinant Collagen Type IV Alpha 3 (COL4a3)
Organism Species: Homo sapiens (Human)
Instruction manual

FOR IN VITRO USE AND RESEARCH USE ONLY
NOT FOR USE IN CLINICAL DIAGNOSTIC PROCEDURES

9th Edition (Revised in Jul, 2013)

[PROPERTIES]

Residues: Leu1428~His1670 (Accession # Q01955), with two N-terminal Tags, His-tag and GST-tag.

Host: *E. coli*

Subcellular Location: Secreted, extracellular space, extracellular matrix, basement membrane.

Purity: >95%

Endotoxin Level: <1.0EU per 1µg (determined by the LAL method).

Formulation: Supplied as lyophilized form in PBS, pH7.4, containing 5% trehalose, 0.01% sarcosyl.

Predicted isoelectric point: 8.2 **Predicted**

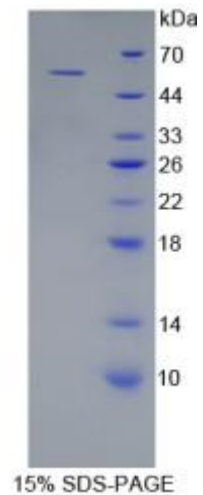
Molecular Mass: 58.9kDa **Applications:**

SDS-PAGE; WB; ELISA; IP.

(May be suitable for use in other assays to be determined by the end user.)

[USAGE]

Reconstitute in sterile PBS, pH7.2-pH7.4.





[STORAGE AND STABILITY]

Storage: Avoid repeated freeze/thaw cycles.

Store at 2-8°C for one month.

Aliquot and store at -80°C for 12 months.

Stability Test: The thermal stability is described by the loss rate of the target protein. The loss rate was determined by accelerated thermal degradation test, that is, incubate the protein at 37°C for 48h, and no obvious degradation and precipitation were observed. (Referring from China Biological Products Standard, which was calculated by the Arrhenius equation.) The loss of this protein is less than 5% within the expiration date under appropriate storage condition.

[SEQUENCES]

The target protein is fused with two N-terminal Tags, His-tag and GST-tag, its sequence is listed below.

MSPILGYWKI KGLVQPTRL L LEYLEEKYEE HLYERDEGDK WRNKKFELGL EFPNLPYYID
GDVKLTQSMA IIRYIADKHN MLGGCPKERA EISMLEGAVL DIRYGVSRIA YSKDFETLKV
DFLSKLP EML KMFEDRLCHK TYLNGDHVTH PDFMLYDALD VVLYMDPMCL DAFPKLVCFK
KRIEAI PQID KYLKSSKYIA WPLQG WQATF GGGDHPPKSD GSTSGSGHHH HHSAGLVPR
GSTAIGM KET AA AKFERQH M DSPDLGTGGG SGIEGRGSMG YRGS-LKG KRGDSPAT
WTRGFV FTR HSQTTAIPSC PEGTVPLYSG FSFLFVQGNQ RAHGQDLGTL GSCLQRFTM
PFLFCNVNDV CNFASRNDYS YWLSTPALMP MNMAPITGRA LEPYISRCTV CEGPAIAIAV
HSQTTDIPPC PHGWISLWKG FSFIMFTSAG SEGTGQALAS PGSCLEEFRA SPFLECHGRG
TCNYYSNSYS FWLASLNPER MFRKPI PSTV KAGELEKIIS RCQVCMKKRH