



TEL:4006-871-227 Web:www.ybio.net Email:shybio@126.com

YBG523Hu01 100µg
V-Yes-1 Yamaguchi Sarcoma Viral Related Oncogene Homolog (LYN)
Organism Species: Homo sapiens (Human)
Instruction manual

FOR IN VITRO USE AND RESEARCH USE ONLY
NOT FOR USE IN CLINICAL DIAGNOSTIC PROCEDURES

9th Edition (Revised in Jul, 2013)

[PROPERTIES]

Residues: Val263~Pro491 (Accession # P07948), with two N-terminal Tags, His-tag and T7-tag.

Host: *E. coli*

Subcellular Location: Cell membrane. Nucleus.

Cytoplasm, perinuclear region. Golgi apparatus.

Purity: >95%

Endotoxin Level: <1.0EU per 1µg
(determined by the LAL method).

Formulation: Supplied as lyophilized form in PBS,
pH7.4, containing 5% sucrose, 0.01% sarcosyl.

Predicted isoelectric point: 5.7

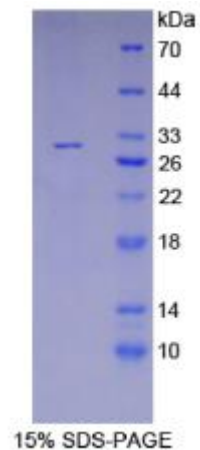
Predicted Molecular Mass: 30.2kDa

Applications: SDS-PAGE; WB; ELISA; IP.

(May be suitable for use in other assays to be determined by the end user.)

[USAGE]

Reconstitute in sterile PBS, pH7.2-pH7.4.





TEL:4006-871-227 Web:www.ybio.net Email:shybio@126.com

[STORAGE AND STABILITY]

Storage: Avoid repeated freeze/thaw cycles.

Store at 2-8°C for one month.

Aliquot and store at -80°C for 12 months.

Stability Test: The thermal stability is described by the loss rate of the target protein. The loss rate was determined by accelerated thermal degradation test, that is, incubate the protein at 37°C for 48h, and no obvious degradation and precipitation were observed. (Referring from China Biological Products Standard, which was calculated by the Arrhenius equation.) The loss of this protein is less than 5% within the expiration date under appropriate storage condition.

[SEQUENCES]

The target protein is fused with two N-terminal Tags, His-tag and T7-tag, its sequence is listed below.

**MGSSHHHHH SGLVPRGSH MASMTGGQQM GRGSEF- VQAFLEEA NLMKTLQHDK
LVRLYAVVTR EEPIYIITEY MAKGSLLDFL KSEGGKVLL PKLIDFSAQI AEGMAYIERK
NYIHRDLRAA NVLVSESLMC KIADFGRLARV IEDNEYTARE GAKFPIKWTA PEAINFGCFT
IKSDVWSFGI LLYEIVTYGK IPYPGRTNAD VMTALSQGYR MPRVENCPE LYDIMKMCWK
EKAEERPTFD YLQSVLDDFY TATEGYQQQ P**