



TEL:4006-871-227 Web:www.ybio.net Email:shybio@126.com

YBC727Hu01 100µg

Recombinant Protein Kinase D3 (PKD3)

Organism Species: Homo sapiens (Human)

Instruction manual

FOR IN VITRO USE AND RESEARCH USE ONLY

NOT FOR USE IN CLINICAL DIAGNOSTIC PROCEDURES

10th Edition (Revised in Jan, 2014)

[PROPERTIES]

Residues: Ile576~Leu832

Tags: Two N-terminal Tags, His-tag and T7-tag

Accession: O94806

Host: *E. coli*

Subcellular Location: Cytoplasm. Membrane.

Purity: >90%

Endotoxin Level: <1.0EU per 1µg (determined by the LAL method).

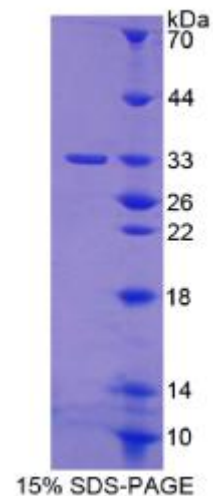
Formulation: Supplied as lyophilized form in PBS, pH7.4, containing 5% trehalose, 0.01% sarcosyl.

Predicted isoelectric point: 8.4

Predicted Molecular Mass: 29.4kDa

Applications: SDS-PAGE; WB; ELISA; IP.

(May be suitable for use in other assays to be determined by the end user.)



[USAGE]

Reconstitute in sterile PBS, pH7.2-pH7.4.



TEL:4006-871-227 Web:www.ybio.net Email:shybio@126.com

[STORAGE AND STABILITY]

Storage: Avoid repeated freeze/thaw cycles.

Store at 2-8°C for one month.

Aliquot and store at -80°C for 12 months.

Stability Test: The thermal stability is described by the loss rate of the target protein. The loss rate was determined by accelerated thermal degradation test, that is, incubate the protein at 37°C for 48h, and no obvious degradation and precipitation were observed. (Referring from China Biological Products Standard, which was calculated by the Arrhenius equation.) The loss of this protein is less than 5% within the expiration date under appropriate storage condition.

[SEQUENCES]

The sequence of the target protein is listed below.

**IFADE VLGSGQFGIV YGGKHRKTGR DVAIKVIDKM RFPTKQ ESQ L RNEVAILQNL
HHPGIVNLEC MFETPERV FV VMEK LHGDML EMILSSEKSR LPERITKFMV TQILVALRNL
HFKNIVHCDL KPENVLLASA EPPFQVKLCD FGFARIIGE K SFRRSVVGTP AYL APEV LRS
KGYNRS LDMW SVGVIIYVSL SGTFFNEDE DINDQIQNAA FMYPPNPWRE ISGEAIDLIN
NLLQVKMRKR YSVDKSLSHP WL**