



TEL:4006-871-227 Web:www.ybio.net Email:shybio@126.com

**YBC082Mu01 50µg**

**Recombinant Laminin Gamma 1 (LAMC1)**

**Organism Species: Mus musculus (Mouse)**

***Instruction manual***

**FOR IN VITRO USE AND RESEARCH USE ONLY**

**NOT FOR USE IN CLINICAL DIAGNOSTIC PROCEDURES**

10th Edition (Revised in Jan, 2014)

## **[ PROPERTIES ]**

**Residues: Glu1228~Arg1404**

**Tags: N-terminal His-Tag**

**Accession: P02468**

**Host: *E. coli***

**Subcellular Location: Secreted, extracellular space,  
extracellular matrix, basement membrane.**

**Purity: >95%**

**Endotoxin Level: <1.0EU per 1µg (determined by the  
LAL method).**

**Formulation: Supplied as lyophilized form in 20mM**

**Tris, 150mM NaCl, pH8.0, containing 1mM EDTA, 1mM**

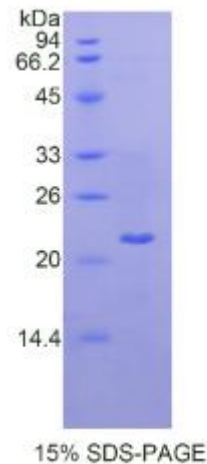
**DTT, 0.01% sarcosyl, 5% trehalose, and preservative.**

**Predicted isoelectric point: 5.7**

**Predicted Molecular Mass: 21.2kDa**

**Applications: SDS-PAGE; WB; ELISA; IP.**

**(May be suitable for use in other assays to be determined by the end user.)**



## **[ USAGE ]**



TEL: 4006-  
871-227 Web: [www.ybio.net](http://www.ybio.net)  
Email: [shybio@126.com](mailto:shybio@126.com)

**Reconstitute in sterile ddH<sub>2</sub>O.**



## **[ STORAGE AND STABILITY ]**

**Storage: Avoid repeated freeze/thaw cycles.**

**Store at 2-8°C for one month.**

**Aliquot and store at -80°C for 12 months.**

**Stability Test:** The thermal stability is described by the loss rate of the target protein. The loss rate was determined by accelerated thermal degradation test, that is, incubate the protein at 37°C for 48h, and no obvious degradation and precipitation were observed. (Referring from China Biological Products Standard, which was calculated by the Arrhenius equation.) The loss of this protein is less than 5% within the expiration date under appropriate storage condition.

## **[ SEQUENCES ]**

**The sequence of the target protein is listed below.**

EE LNRKYEQA KNI SQDLEKQAARVHEEAKRAGDKAVEIYASVAQLTPVDSEAL  
ENEANKIKKEAADLRLIDQKLKDYEDLREDMRGKEHEVKNLLEKGKAEQQTADQLLARA  
DAAKALAEEA AKKGRSTLQEANDILNNLKD FDRRVNDNKTAAEEALRRIPAINRTIAEAN  
EKTR

## **[ REFERENCES ]**

1. Sasaki M., Yamada Y. (1987) J. Biol. Chem. 262:17111-17117.
2. Durkin M.E., *et al.* (1988) Biochemistry 27:5198-5204.
3. Ogawa K., *et al.* (1988) J. Biol. Chem. 263:8384-8389.
4. Barlow D.P., *et al.* (1984) EMBO J. 3:2355-2362.