



TEL:4006-871-227 Web:www.ybio.net Email:shybio@126.com

**YBE271Hu01 100µg**

**Recombinant C-Mer Proto Oncogene Tyrosine Kinase (MERTK)**

**Organism Species: Homo sapiens (Human)**

***Instruction manual***

**FOR IN VITRO USE AND RESEARCH USE ONLY**

**NOT FOR USE IN CLINICAL DIAGNOSTIC PROCEDURES**

10th Edition (Revised in Jan, 2014)

## **[ PROPERTIES ]**

**Residues: Leu587~Leu858**

**Tags: Two N-terminal Tags, His-tag and T7-tag**

**Accession: Q12866**

**Host: *E. coli***

**Subcellular Location: Membrane; Single-pass  
type I membrane protein.**

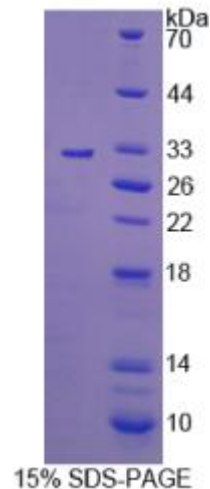
**Purity: >95%**

**Endotoxin Level: <1.0EU per 1µg (determined by the  
LAL method).**

**Formulation: Supplied as lyophilized form in PBS,  
pH7.4, containing 5% trehalose, 0.01% sarcosyl.**

**Predicted isoelectric point: 6.2**

**Predicted Molecular Mass: 35.0kDa**



The possible reasons that the actual band size differs from the predicted are as follows:

**Accurate Molecular Mass: 32kDa as determined by SDS-PAGE reducing  
conditions. Applications: SDS-PAGE; WB; ELISA; IP.**

**(May be suitable for use in other assays to be determined by the end user.)**

**Note:**

1. Splice variants: Alternative splicing may create different sized proteins from the same gene.
2. Relative charge: The composition of amino acids may affects the charge of the protein.



TEL:4006-871-227 Web:www.ybio.net Email:shybio@126.com

**3. Post-translational modification: Phosphorylation, glycosylation, methylation etc.**

**4. Post-translation cleavage: Many proteins are synthesized as pro-proteins, and then cleaved to give the active form.**

**5. Polymerization of the target protein: Dimerization, multimerization etc.**



TEL:4006-871-227 Web:www.ybio.net

Email:shybio@126.com

## **[ USAGE ]**

Reconstitute in sterile PBS, pH7.2-pH7.4.

## **[ STORAGE AND STABILITY ]**

Storage: Avoid repeated freeze/thaw cycles.

Store at 2-8°C for one month.

Aliquot and store at -80°C for 12 months.

Stability Test: The thermal stability is described by the loss rate of the target protein. The loss rate was determined by accelerated thermal degradation test, that is, incubate the protein at 37°C for 48h, and no obvious degradation and precipitation were observed. (Referring from China Biological Products Standard, which was calculated by the Arrhenius equation.) The loss of this protein is less than 5% within the expiration date under appropriate storage condition.

## **[ SEQUENCES ]**

The sequence of the target protein is listed below.

LILG KILGEG EFG S VME GNLK QED GTSLKVAVK T MKLDN SSQ RE IE EFLSEAAC  
MKDFSHPNVI RLLGVCIEMS SQGIPKPMVI LPFMKYGDH TYLLYSRLET GPKHIPLQTL  
LKFMVDIALG MEYLSNRNFL HRDLAARNCM LRDDMTVCVA DFGLSKKIYS GDYYRQGRIA  
KMPVKWIAIE SLADRVYTSK SDVWAFGVTM WEIATRGMTTP YPGVQNHEMY DYLLHGHRLK  
QPEDCLDELY EIMYSCWRD PLDRPTFSVL RLQLEKLL