



TEL:4006-871-227 Web:www.ybio.net Email:shybio@126.com

**YBA058Ca01 100µg**

**Recombinant Interleukin 12B (IL12B)**

**Organism Species: Canis familiaris; Canine (Dog)**

***Instruction manual***

**FOR IN VITRO USE AND RESEARCH USE ONLY**

**NOT FOR USE IN CLINICAL DIAGNOSTIC PROCEDURES**

10th Edition (Revised in Jan, 2014)

## **[ PROPERTIES ]**

**Residues: Ile23~Ser329**

**Tags: Two N-terminal Tags, His-tag and T7-tag**

**Accession: Q28268**

**Host: *E. coli***

**Subcellular Location: Secreted.**

**Purity: >95%**

**Endotoxin Level: <1.0EU per 1µg (determined by the LAL method).**

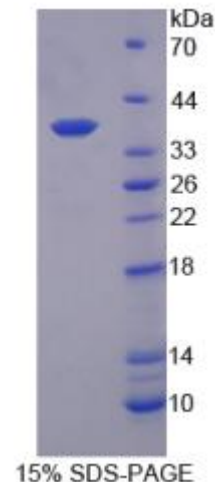
**Formulation: Supplied as lyophilized form in PBS, pH7.4, containing 5% trehalose, 0.01% sarcosyl.**

**Predicted isoelectric point: 6.8**

**Predicted Molecular Mass: 38.6kDa**

**Applications: SDS-PAGE; WB; ELISA; IP.**

**(May be suitable for use in other assays to be determined by the end user.)**



## **[ USAGE ]**

**Reconstitute in sterile PBS, pH7.2-pH7.4.**



TEL:4006-871-227 Web:www.ybio.net Email:shybio@126.com

## **[ STORAGE AND STABILITY ]**

**Storage: Avoid repeated freeze/thaw cycles.**

**Store at 2-8°C for one month.**

**Aliquot and store at -80°C for 12 months.**

**Stability Test: The thermal stability is described by the loss rate of the target protein. The loss rate was determined by accelerated thermal degradation test, that is, incubate the protein at 37°C for 48h, and no obvious degradation and precipitation were observed. (Referring from China Biological Products Standard, which was calculated by the Arrhenius equation.) The loss of this protein is less than 5% within the expiration date under appropriate storage condition.**

## **[ SEQUENCES ]**

**The sequence of the target protein is listed below.**

**IWELEKDV YVELDWHPD APGEMVLTG HTPEEDDITW TSAQSSEVLG SGKTLTIQVK  
EFGDAGQYTC HKGGKVLRSR LLLIHKKEDG IWSTDILKEQ KESKNKIFLK CEAKNYSGRF  
TCWWLTAIST DLKFSVKSSR GFSDPQGVTC GAVTLAERV RVDNRDYKKY TVECQEGSAC  
PSAEESLPIE VVVDIAHKLK YENYTSSFFI RDIKPDPT NLQLKPLKNS RHVEVSWEYP  
DTWSTPHSYF SLTFCVQAQG KNNREKKDRL CVDKTSKVV CHKDAKIRVQ ARDRYSSSW  
SDWASVSCS**