



TEL:4006-871-227 Web:www.ybio.net Email:shybio@126.com

YBC006Hu01 100µg

Recombinant Interleukin 8 Receptor Beta (IL8Rb)

Organism Species: Homo sapiens (Human)

Instruction manual

**FOR IN VITRO USE AND RESEARCH USE ONLY
NOT FOR USE IN CLINICAL DIAGNOSTIC PROCEDURES**

10th Edition (Revised in Jan, 2014)

[PROPERTIES]

Residues: Met1~Leu57

Tags: Two N-terminal Tags, His-tag and GST-tag

Accession: P25025

Host: *E. coli*

Subcellular Location: Cell membrane; Multi-pass membrane protein.

Purity: >90%

Endotoxin Level: <1.0EU per 1µg (determined by the LAL method).

Formulation: Supplied as lyophilized form in 20mM

Tris, 150mM NaCl, pH8.0, containing 1mM EDTA, 1mM

DTT, 0.01% sarcosyl, 5% trehalose, and preservative.

Predicted isoelectric point: 3.7

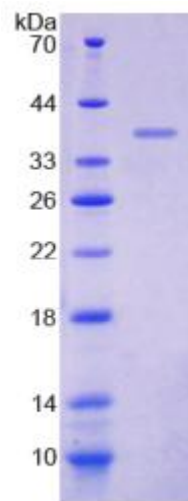
Predicted Molecular Mass: 36.6kDa

Applications: SDS-PAGE; WB; ELISA; IP.

(May be suitable for use in other assays to be determined by the end user.)

[USAGE]

Reconstitute in sterile ddH₂O.





TEL:4006-871-227 Web:www.ybio.net

Email:shybio@126.com

[STORAGE AND STABILITY]

Storage: Avoid repeated freeze/thaw cycles.

Store at 2-8°C for one month.

Aliquot and store at -80°C for 12 months.

Stability Test: The thermal stability is described by the loss rate of the target protein. The loss rate was determined by accelerated thermal degradation test, that is, incubate the protein at 37°C for 48h, and no obvious degradation and precipitation were observed. (Referring from China Biological Products Standard, which was calculated by the Arrhenius equation.) The loss of this protein is less than 5% within the expiration date under appropriate storage condition.

[SEQUENCES]

The sequence of the target protein is listed below.

MEDFNMESDS FEDFWKGEDL SNYSYSSTLP PFLLDAAPCE PESLEINKYF VVIYAL

[REFERENCES]

- 1. Murphy P.M., Tiffany H.L. (1991) Science 253:1280-1283.**
- 2. Cerretti D.P., *et al.* (1993) Mol. Immunol. 30:359-367.**
- 3. Sprenger H., *et al.* (1994) J. Biol. Chem. 269:11065-11072.**
- 4. Ahuja S.K., *et al.* (1994) J. Biol. Chem. 269:26381-26389.**