



TEL:4006-871-227 Web:www.ybio.net Email:shybio@126.com

YBB873Ra01 100µg

Recombinant Cluster Of Differentiation 19 (CD19)

Organism Species: Rattus norvegicus (Rat)

Instruction manual

FOR IN VITRO USE AND RESEARCH USE ONLY

NOT FOR USE IN CLINICAL DIAGNOSTIC PROCEDURES

10th Edition (Revised in Jan, 2014)

[PROPERTIES]

Residues: Arg19~Gly287

Tags: Two N-terminal Tags, His-tag and GST-

Accession: F1LNH2

Host: *E. coli*

**Subcellular Location: Membrane. Single-pass
type I membrane protein.**

Purity: >95%

**Endotoxin Level: <1.0EU per 1µg (determined by
the LAL method).**

**Formulation: Supplied as lyophilized form in
PBS, pH7.4, containing 5% trehalose, 0.01%
sarcosyl.**

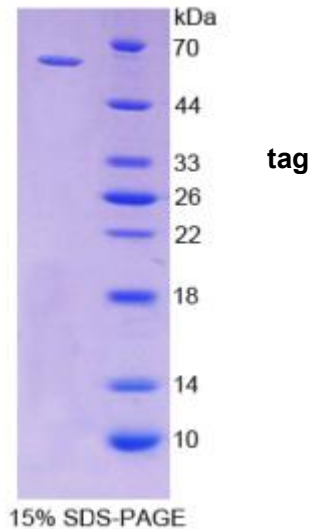
Predicted isoelectric point: 6.5

Predicted Molecular Mass: 59.7kDa

Applications: SDS-PAGE; WB; ELISA; IP.

(May be suitable for use in other assays to be determined by the end user.)

[USAGE]





TEL:4006-871-227

Web:www.ybio.net

Email:shybio@126.com

Reconstitute in sterile PBS, pH7.2-pH7.4.



[STORAGE AND STABILITY]

Storage: Avoid repeated freeze/thaw cycles.

Store at 2-8°C for one month.

Aliquot and store at -80°C for 12 months.

Stability Test: The thermal stability is described by the loss rate of the target protein. The loss rate was determined by accelerated thermal degradation test, that is, incubate the protein at 37°C for 48h, and no obvious degradation and precipitation were observed. (Referring from China Biological Products Standard, which was calculated by the Arrhenius equation.) The loss of this protein is less than 5% within the expiration date under appropriate storage condition.

[SEQUENCES]

The sequence of the target protein is listed below.

RP QN S L LV E V E E G D N V V L S C L R D S S P V S S E K L A W Y R G N Q S T P F L E L S L R S P D
LGLHIGPLGI LLVIVNVSDH RGGFYLCQKR PSFKDTWQPA WTVNVEDSGE LFRWNASDLG
DLDCDLGNRS SGSHRSTSGS QLYVWATDHP EVWKTKPVCA PREISLNQSL INQDLTVAPG
STLWLSCGVP PVPVTKGSIS WTHVHPKTLN VSLLSLSLGG EHPVREMWWV GSLLLLPQAK
ASDEGTYCYCL QGGLTIKMHV KVIARSAVWL WLLRTGG